

Roseworthy Student Newsletter

Page 1

NEWS FROM THE APO

W e l c o m e b a c k e v e r y o n e .

I hope you had a relaxing holiday and are ready to tackle a new semester and its challenges. Now, for some of you, your Semester 1 results may not be quite what you were hoping for – if you are worried/concerned about what this may mean to your future (including progression within your current program, potential for transfer into another program, or just continuing on at Uni), please come and see either myself or Sally Polkinghorne. In most cases, it will only be a slight bump in the road (although it may currently feel like you have hit a brick wall) and we can work with you to make sure Semester 2 continues on.

As always, Semester 2 is full of activities, including the various AVSA-sponsored lunch & learns, Honours information sessions, pre-vet transfer information sessions, careers information sessions. I will add these to the calendar as they become set, so keep an eye on the Student Calendar at <http://www.adelaide.edu.au/vetsci/current/newsletter1/>.

And, for those students involved in the Led Steer team that will be competing at the various shows over the coming months, Good Luck!

Di

Dr Di Barton
Academic Programs Officer
School of Animal and Veterinary Sciences

Come and Say Goodbye



To Elaine in the Front Office in the Main Building. Her last day will be 10th August and then she will be off to Swan Bay in Victoria.

We know that most people do stay here for a bit longer than 18 months but the lure of a house on the coast was too much for her.

(Doesn't she realise if it's not raining, it's freezing cold in Victoria???)

Chaplain Ilze Coombe would like to hold a beginning of Semester Service on Thurs. 9th August. At 12.15pm in the chapel. Any offers from musically inclined students to play accompaniment to songs gratefully accepted.

Please contact Ilze on 0424 972 033 asap.



DIARY DATES

Tuesday 25th July -
12pm-2pm Welcome Back day at the Tavern

Thursday 26th July -
12pm-2pm Welcome Back day at the Tavern

Monday 6th August -
Residential Student Dinner
6.00pm The College Dining Room

Friday 14th August
Last day to withdraw without incurring Semester Two Fees

Friday 14th September-
Last Day to Withdraw not Fail

Friday 21st September-
Last day for Alternative Exam Arrangements

Inside this issue:

| | |
|-------------------------------------|---|
| Residential College News | 2 |
| AUU Welcome Back Day | 3 |
| Library News | 4 |
| Maitidli Cafe and Roseworthy Tavern | 5 |
| Pilates Student Advisor | 6 |
| BARC news | 7 |

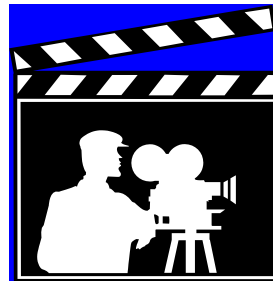
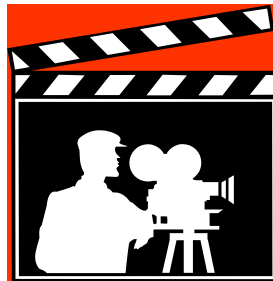
ROSEWORTHY RESIDENTIAL COLLEGE



**THE UNIVERSITY
of ADELAIDE**

WELCOME BACK

to All Students!!



Monday 6th August 2012

College Dinner

Night at the Movies

5.30pm Pre Dinner Drinks - College Foyer

6.00pm Dinner

Dress up as your favourite movie star

Prizes for best costume

Games

Door Prizes

Residential Applications for 2013

Applications for 2013 accommodation will be opening in November 2012

Current residents will have the first opportunity to reserve and secure their rooms for 2013!

Want to join the Roseworthy community and experience the benefits of living on-campus?

Want to study, socialise and network with a great group of students?

Come and join the growing number of students living on campus!

If you have any questions come and visit the Accommodation Service Staff.

David Purdie

Manager, Student Services (Roseworthy)



WELCOME BACK *Day!*



Thurs 26 July **The Tavern** **12pm-2pm**

Live Music

Giveaways



NEWS FROM THE LIBRARY

New Library Hours Semester Two

| | | | |
|-----------|---------|----------|------------------------|
| Monday | Tuesday | Thursday | 8:30am – 6:00pm |
| Wednesday | | | 8:30am – 9:00pm |
| Friday | | | 8:30am – 5:00pm |
| Sunday | | | 1:00pm – 5:00pm |

Extended opening hours Semester 2

In response to students' requests and also due to the success of the trial extension of opening hours in June, the Library will open on **Wednesday nights during Semester 2, until 9.00pm.**

No more demerit points, but....

In Semester 2, books returned late will no longer incur demerit points, however, to ensure fair sharing of library resources, if books are kept beyond the date of despatch of the final overdue notice, an invoice will be sent for the replacement cost of the book plus a non-refundable handling charge of \$30.00.

It is very important to read your University email, as Library notices indicating overdue items or new due dates for recalled items will be sent to your University email address. Please see the Library website for more information.

Featured new titles in the Library

Series of bone building books by Lee Post

A series of 10 manuals (each one dedicated to a different group of animals), explaining how to clean, prepare and articulate the skeleton of that animal in a simple step by step manner.

Some titles in this series:

Bone builder's notebook.

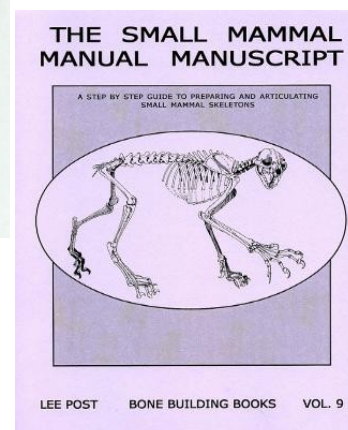
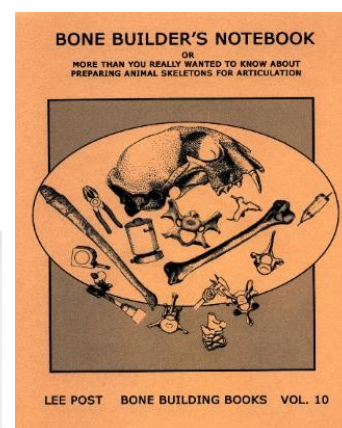
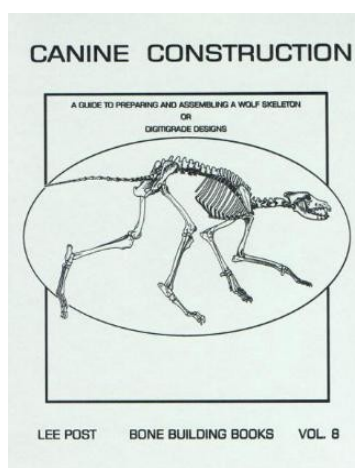
Roseworthy Books 571.31 P8573bo

Canine construction.

Roseworthy Books 571.31 P8573c

The Small mammal manual manuscript: a step by step guide to preparing and articulating small mammal skeletons.

Roseworthy Books 571.31 P8573s





MAITIDLI CAFE NEWS

Opening times

8am to 4pm

NEW BREKKIE ON THE RUN!

Raisin bread with regular coffee \$4.30

Hot Omelette Wrap \$7

Working back late?

Why not drop in for dinner?

We are open from 6pm to 7:30pm

Don't forget to utilise our pre-order/pre-pay system, especially on those busy days!

Phone orders are most welcome..37815!

Book your upcoming function with us now!

cec
catering&events
oncampus



ROSI TAVERN NEWS

Tuesday 24th July

“Crafty” will be performing on stage

8:30pm to 11:30pm

FRIDAYS

Knock off and nibbles

4pm to 6:00pm

Meet new people or treat your staff, after a hard week at the office!

Bar snacks available from 4:30pm

FOR SALE FOR SALE FOR SALE FOR SALE FOR SALE

2008 Blue Mazda 3 Neo Sports Sedan Manual

Excellent Condition

56,000 kms

Cruise Control, 6 air bags, safety pack and other features

\$14,500 ono

Please reply to : judy.tucker@adelaide.edu.au or phone 0407 617 024 if interested as soon as possible.

FOR SALE FOR SALE FOR SALE FOR SALE FOR SALE



Last semester we held Pilates every Monday night for students and staff.

We would love to offer Pilates again this semester, however, we ask that you register your interest before we determine if classes will continue.

We need a minimum of 10 participants per week for classes to run.

If you are keen to be involved please contact Sally Polkinghorne via e-mail to express your interest - sally.polkinghorne@adelaide.edu.au

We anticipate that classes would commence on Monday 6/8 at 5.30pm

Where: On Campus - Callaghan 18A & 18B

STUDENT SUPPORT AND DISABILITY ADVISOR

The Roseworthy Student Support and Disability Advisor offers a free and confidential service to students.

If you need assistance with

- study and time management techniques
- achieving a balance in life & reducing stress
- managing a health condition and successfully studying

The Student Support & Disability Advisor may be able to help you.

For further information, contact Sally Polkinghorne
G27, Williams Building Roseworthy Campus University of Adelaide
Phone: 8313 7932 Email: sally.polkinghorne@adelaide.edu.au
www.adelaide.edu.au/student/support/roseworthy

Alternative Examination Arrangements (AEA's)

**All applications must be lodged with
The Disability Service by Friday September 21st 2012.**

If you think you may be eligible check out the website www.adelaide.edu.au/disability

or contact

Sally Polkinghorne

Email: sally.polkinghorne@adelaide.edu.au

Phone: 8313 793

HOW CAN YOU HELP???

David Wakeham a 3rd yr Animal Science student spent some time in South Africa over the Christmas break volunteering in association with the African Elephants Research Unit (AERU) and at a lion breeding centre working as a ranger and a guide. David highly recommends doing volunteer work especially in another culture. Volunteering provides an opportunity to improve and increase your animal handling skills and apply the knowledge you have gained from your studies. It is also a chance to make new contacts and to give back to the broader community.



In November/December this year David will be volunteering at BARC the Bali dog adoption and rehabilitation centre. BARC relies heavily on donations, fundraisers and the work of volunteers to help relieve the suffering, starvation, abuse and neglect of the Bali street dogs with care, community awareness and education.

There are a number of ways you can help to support BARC in a practical manner. David is accepting donations of day to day items such as Fish Oil Capsules, Zinc Tablets, Echinacea Capsules, Vitamin C Tablets and Evening Primrose Oil. More specialist items such as IV Catheters and Infusion Sets (22G & 14G), Syringes & needles, Sterile Gloves - Size 7 & 8, Gauze Swabs and Doxycycline Antibiotic tablets are also needed.

David is also raising funds to sponsor a sterilization day so keep a look out for collection containers that will be placed around campus in the very near future. Any loose change you have will be greatly appreciated. If you would like any more information about BARC their web link is www.balidogrefuge.com

Thank you in advance for your kindness! Please feel free to contact David if you would like more information or to find out how you can help.

