

37805
05
63 [7.11.79]

QUICK DIT

YOUR UNION MAKES IT IN THE FIELD OF EDUCATION (FINALLY!)

LIBRARY OF THE UNIVERSITY
12 NOV 1979

ADULT DELAID
time too!

At the last meeting of Union Council, your elected representatives decided that an Education Research Officer (E.R.O.) will be employed in 1980.

This means that the Union now has some researching into the areas which affect you the most as students. An E.R.O. will be able to research into things such as assessment procedures. You may all know that in 1975 many of the assessment procedures were changed to "continuous assessment". Continuous assessment worked fairly well, with some opposition, *when there were enough academic staff to ensure that it worked.* However now, too many of us are aware that today's style of "continuous assessment" is not working. The E.R.O. will be able to research this problem, and find constructive means by which we, as students, can improve our position within the current situation (financial and staff - wise) of the University.

The E.R.O. will also be able to serve as a "back-up" person for students who are on the various University, Faculty and Departmental Committees. Consequently the students who are representing us in these areas will be able to make more fully informed decisions.

These are only two areas in which an E.R.O. would work. There are many other areas which need researching - both on-campus and off-campus - to ensure that if you're here for an "education", then your Union is into as many aspects of your education as possible.

There is one catch though. It seems that, during the Council meeting, one Union Councillor wrote out a motion requesting a General Union Meeting on the E.R.O., and then sent it round the table, *without signing it himself.* When asked why, he rather blithely replied "Oh, I just wanted to see what the reaction was".

What this means is that this decision of Union Council may not be able to be

carried out until next March, when the next General Union Meeting (G.U.M.) can be held. It's interesting to see the lengths to which some people will go in order to stop something which they oppose - but in the name of "democracy".

Chris Capper
President S.A.U.A.
Union Councillor



WANT TO OR HAVE TO MOVE OUT OF YOUR PRESENT ABODE?

DONT HAVE MUCH MONEY FOR RENT?

Then University of Adelaide.

STUDENT HOUSING

is for you.

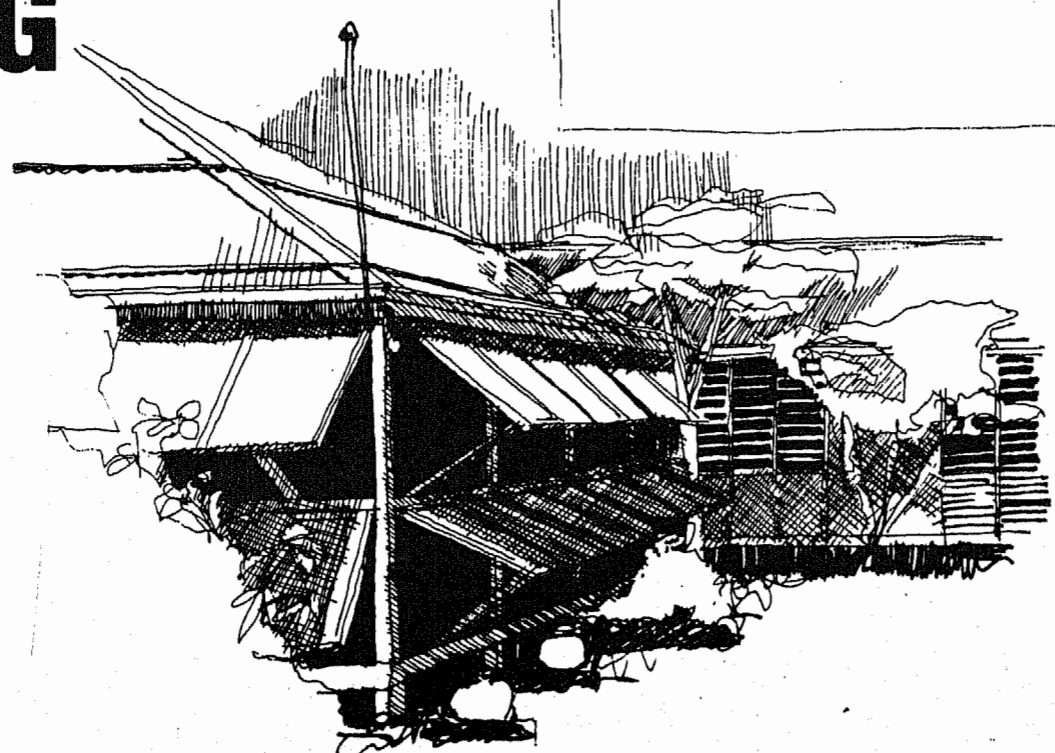
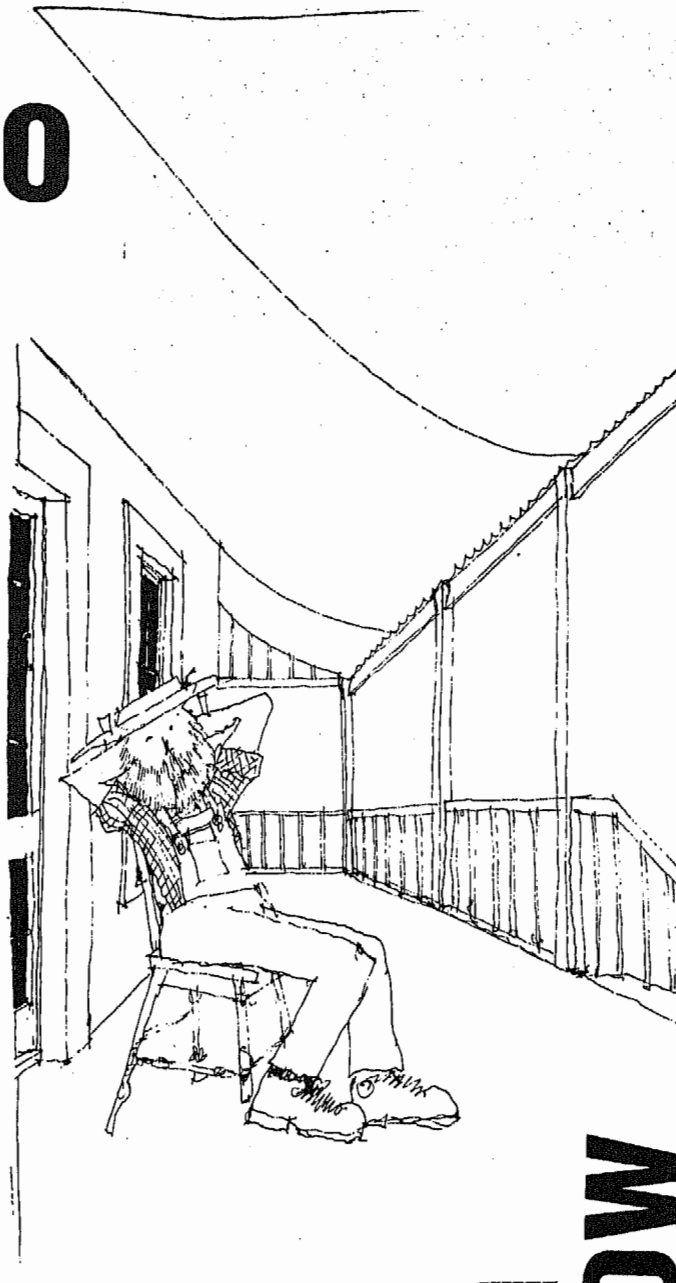
Applications for the Non Collegiate Housing Scheme for 1980 are now open. Accomodation is available for about 48 students in houses in North Adelaide.

Those interested should contact the Union Welfare Officer or Mr. F. Priest, Ground Floor, Old Classics Building.

Note: Existing tenants wishing to remain for all or part of 1980 *must* reapply.

Tenancy runs from 1st December 1979 to 1st November. (applications close very soon).

November 15th in fact, so get off your butts if you need a bed!



APPLY NOW

EDITORIAL

This is just a quickie On Dit to keep you up with whats going on around the place.

Most importantly recently Union Council has been looking at the position of the Education Research Officer and has finally decided to fund it for next year.

This small edition will probably be the last you'll hear from us this year. All that we in the Students' Association can now say is good luck with your exams and thanks for a year of working with and for you.

Looking back over the year it has not been the best for students - with 1% - 1.5% "across-the-board" cutbacks at Adelaide Uni and the effects that his brings; no increase in TEAS; a "fees" system being introduced through the "visa impost" on overseas students.

Looking forward, we've got exams, holidays, holiday jobs (maybe) and then Orientation Week and back to the grind. But speaking of Orientation, think about how you would have *liked* to see O-Week work - and why not get involved in 1980? There are a number of things being organised for next years Orientation, and they need some of your ideas and help. Why not give it a try - you never know it may well be worth it. See ya round - good luck.

Chris Capper

P.S.

If you're wondering why everything in this broadsheet seems muddled and rushed, that's because it is and because you have an inexperienced layout - editing person.




I like to thank all the people in the Students' Association who have helped make my job easier this year. A special thanks to Don Ray and Andrew Frost for always helping (and messing up) the darkroom. Thanks to Karin, Rosie, Carolyn, Jo - Mrs. O. Thank you to all the people who have shown patience and have spent their time to come in and let me know what they want in printing and helped to make my job easier.

All the Best.

Frank Coxon
and Side Kick Glen

Have a good
holiday Frank,
love Chris.

Edited by Nonee Walsh for the Students' Association of the University of Adelaide. Published by Chris Capper 'cos he's got to take responsibility for something. Layout by Chris too 'cos I'm going home.

little sister
is watching you 

THANKS

To Karin, Jo, Frank, Glenn, Andy, don, Nonee, & Chris for their work on this "edition". There's probably lots of other thanks to be handed out but we haven't the time.

CATERING DEPARTMENT TIMES

BISTRO:

Normal trading until December 21st, 1979. Re-opens January 29th, 1980.

CELLAR COFFEE LOUNGE:

Closes on December 21st, 1979. Re-opens Wednesday, January 2nd, 1980.

GRILL BAR:

Ceases normal trading November 23rd, 1979. Operates 8.30 a.m. - 3.00 p.m. November 26th - 30th, 1979. Re-opens March 3rd, 1980.

MAYO REFECTORY:

Ceases normal trading on November 23rd, 1979, when Night Staff finish. The Mayo will provide Hot meal (lunch & dinner) November 26th - 30th, 1979, closing at 6.00 p.m. each evening. After that, No hot meals, lunch only December 3rd - 21st, 1979. Closing at 5.30 p.m. each evening. Closes December 21st, 1979. Re-opens January 29th, 1980.

UPPER REFECTORY:

Closes on October 26th, 1979. Re-opens March 10th, 1980.

Mad About the Media?

The Media Committee of the Students Association is going to produce a Media Paper in the January - February Period in 1980. It is to have as wide a distribution as possible. It is hoped that it can include items on Media Control, ownership, operation effects on the community, and what can be done about it.

If you are interested in helping in this production in any way, please contact Nonee Walsh in On Dit or the Students Association or Paul Brady at Student Radio.

COUNTER CALENDAR

Also if you have words to say or your subjects qualifies or failings come into the Students Association and enquire about what you can do.

ORIENTATION GUIDE

Deadline for Articles is Friday November 16th. If you want to write about University life or think you have anything relevant to say to incoming students - write!

The Bar Will Kill You Yet!

No it's not the excessive alcohol consumption it's the glasses. The last day of term bozze-up showed this clearly as passers by in the cloisters were narrowly missed by plummeting glasses and bottles. It is highly likely that if anyone was directly hit by a falling glass that if not death, at least serious injury would result. Perhaps to cost to the Union could be far more than that of the hundreds of broken glasses that litter the cloisters, or the cost of the stewards who clean it up. It may be time for the Union to look seriously at either screening off, or closing off the balcony altogether.

FACULTY OF ARTS ELECTION

The following candidates are declared elected:

FACULTY OF ARTS

Harold G. HARDING	132
Anne PICARD	121
M. Anne RIDDLE	138

ARTS CURRICULUM

Martin R. COGLAN	77
Harold G. HARDING	66

NOTICES

'O' Camp Helpers

Do you think you have something to give to new students?
Want to help getting them orientated!
Apply now to be a helper on the 1980 Orientation Camps.
Application forms in Student Activities Office Now.

PENFRIEND WANTED by Ghanaian maths student, 22 years. Hobbies are music, soccer, reading, table tennis. Details from J. Schroder, Anatomy, extension 2995 (or leave message on extension 2869).

POTTER'S CLUB

The Annual Exhibition of the Adelaide Potter's Club will this year be held from Saturday 17th November, 1979 until Sunday 25th November at the clubrooms at 15 Liston St. Parkside.

Gallery times are as follows:

Weekdays - 11 a.m. - 4 p.m.
Thursdays - 11 a.m. - 8 p.m.
Fridays - 11 a.m. - 8 p.m.
Weekends - 2 p.m. - 5 p.m.

Pottery display will be on sale and all items will make ideal Christmas gifts. There will be something for everyone, ranging from functional ware to pots and vases of visual interest, planters, casseroles, dishes, drinking mugs and ornaments will also be displayed.

SHAT OFF

with

SWOT VAC?

THEN TRY TOP ADELAIDE BAND

LEMMY CAUTION

THIS FRIDAY 8-12, NOV 9th ADEL. UNI. BAR

FREE! FREE!