

**COMMONWEALTH OF AUSTRALIA**

Copyright Regulations 1969

**WARNING**

This material has been reproduced and communicated to you by or on behalf of  
The University of Adelaide pursuant to Part VB of the Copyright Act 1968 (the Act).

The material in this communication may be subject to copyright under the Act.  
Any further reproduction or communication of this material by you may be the  
subject of copyright protection under the Act.

**Do not remove this notice.**

External Copyright permission (if applicable)



Fig 1

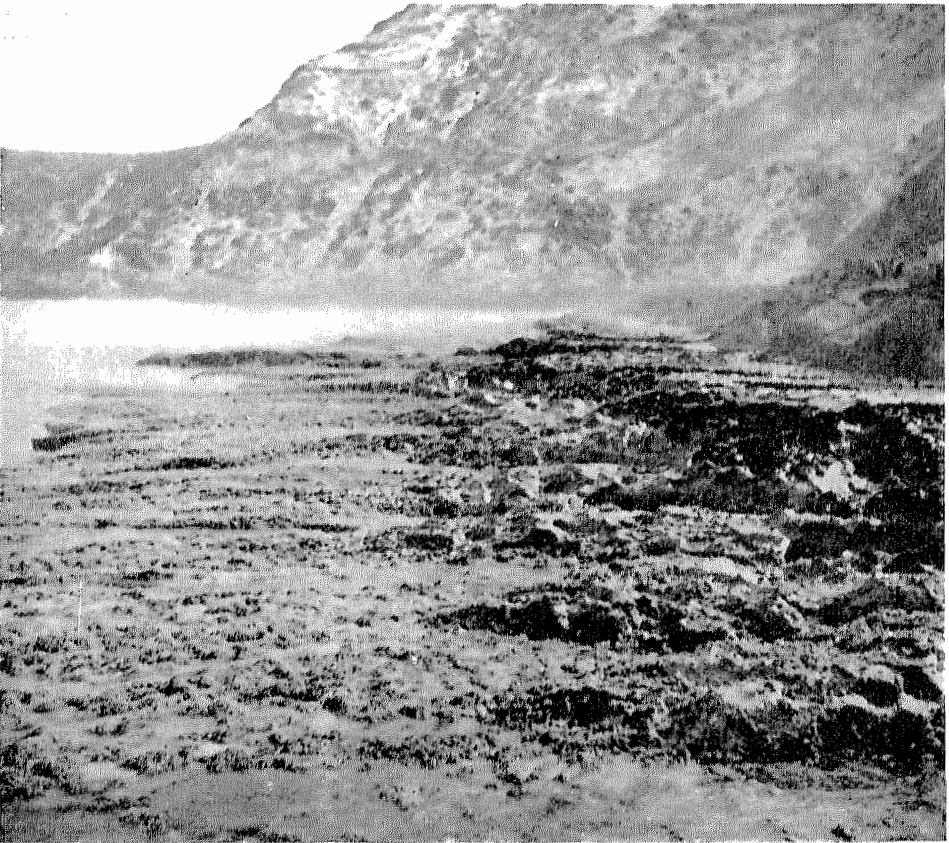


Fig. 2

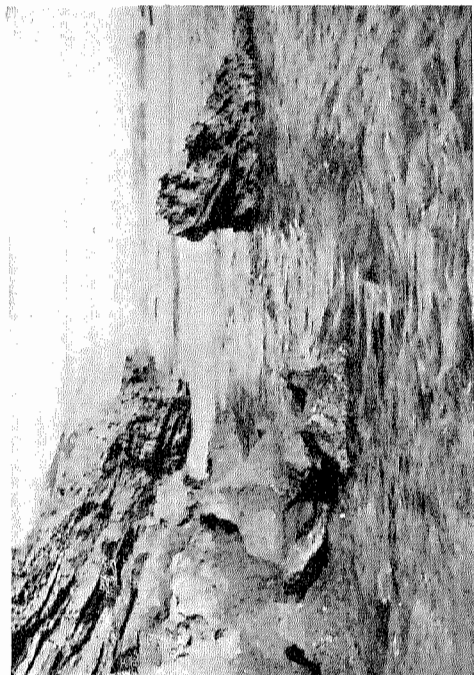


Fig. 2



Fig. 4



Fig. 1

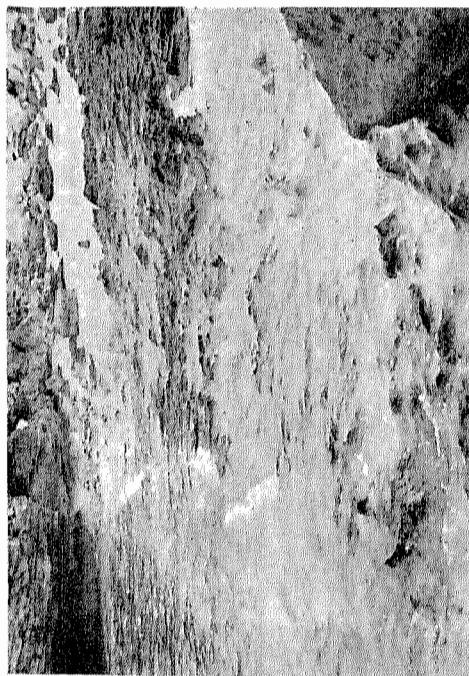


Fig. 3



Fig. 2



Fig. 4

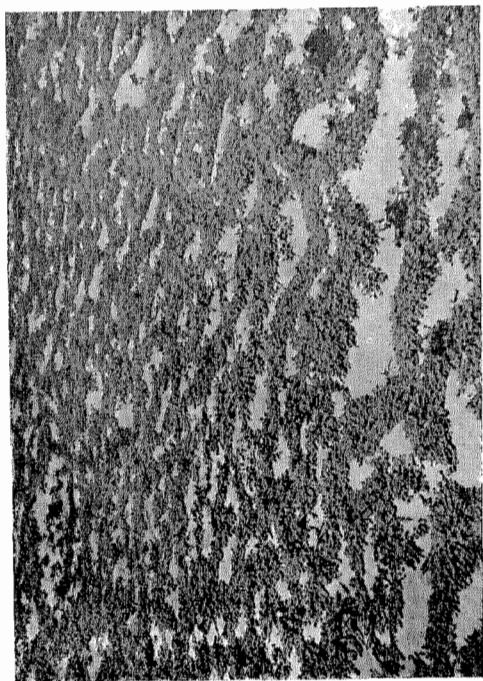


Fig. 1

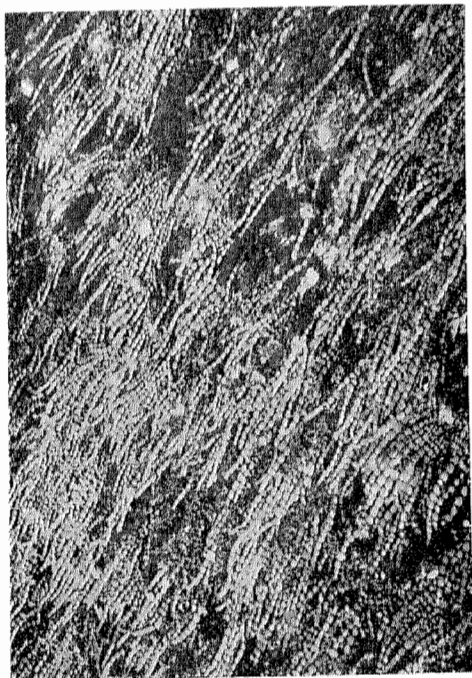


Fig. 3

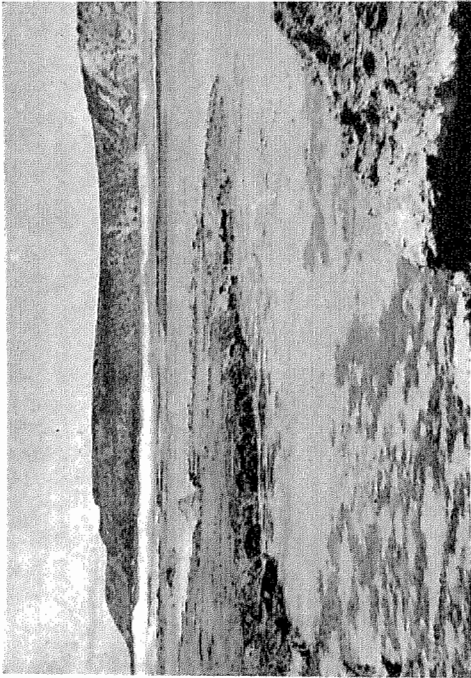


Fig. 2



Fig. 4

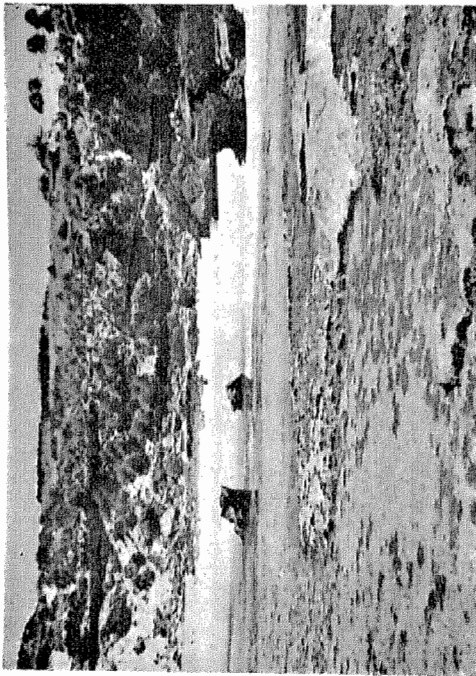


Fig. 1



Fig. 3



Fig. 2

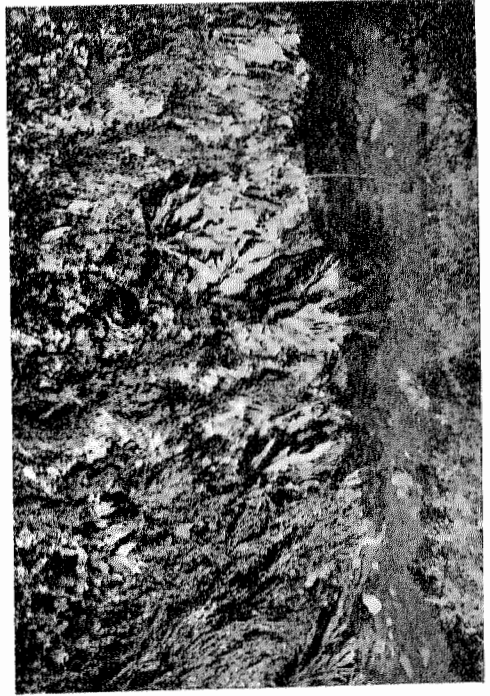


Fig. 4

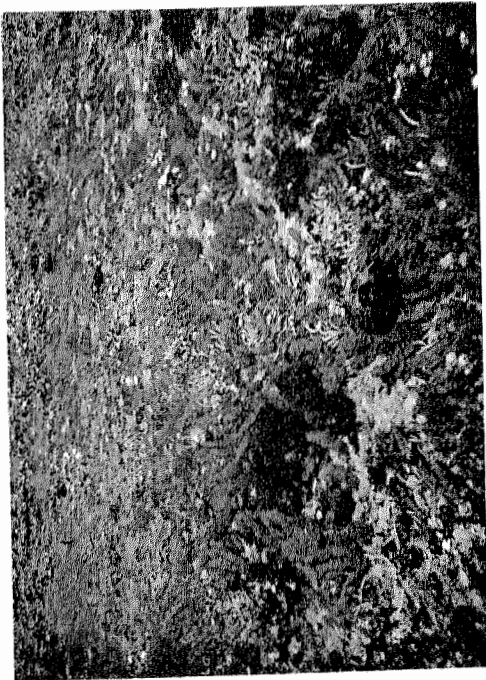


Fig. 1

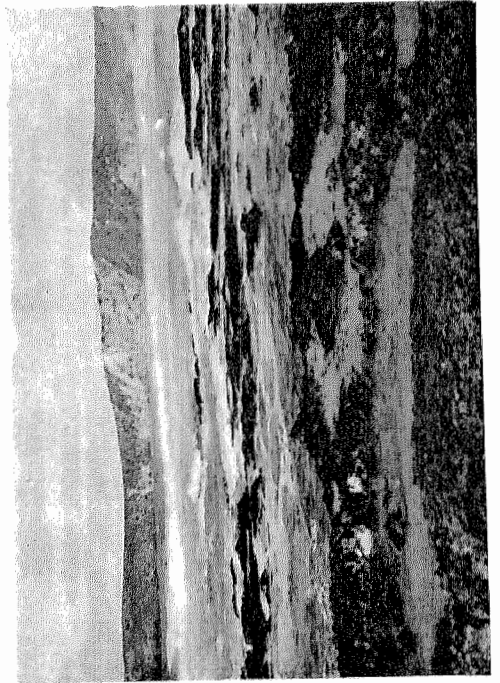


Fig. 3