

Environmental Effects on Recycled Plastics

By

Kan Li

School of Chemical Engineering

Faculty of Engineering, Computer and Mathematical Sciences

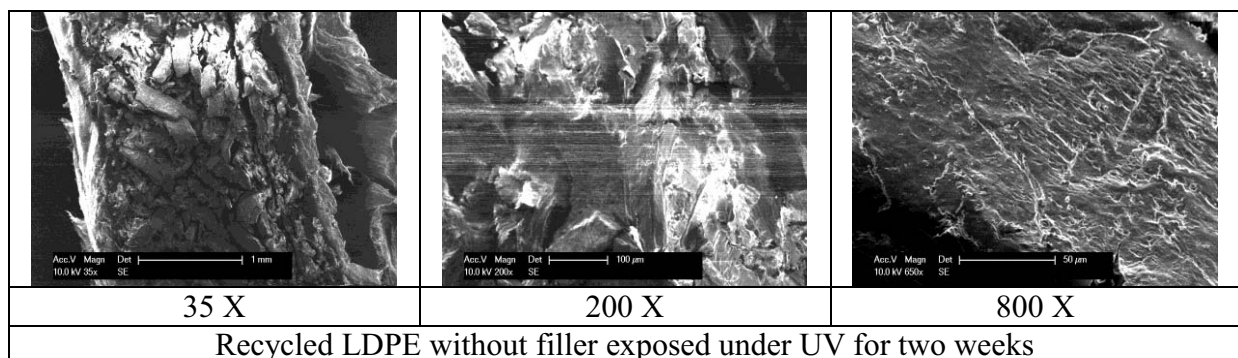
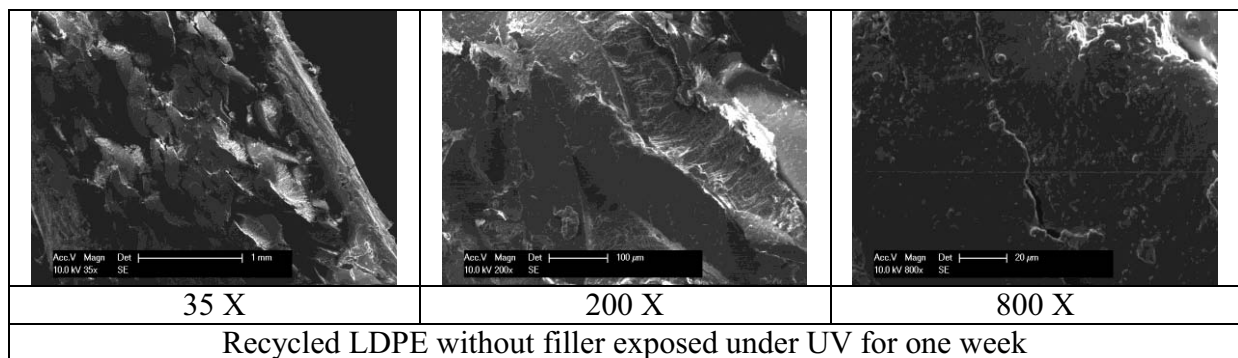
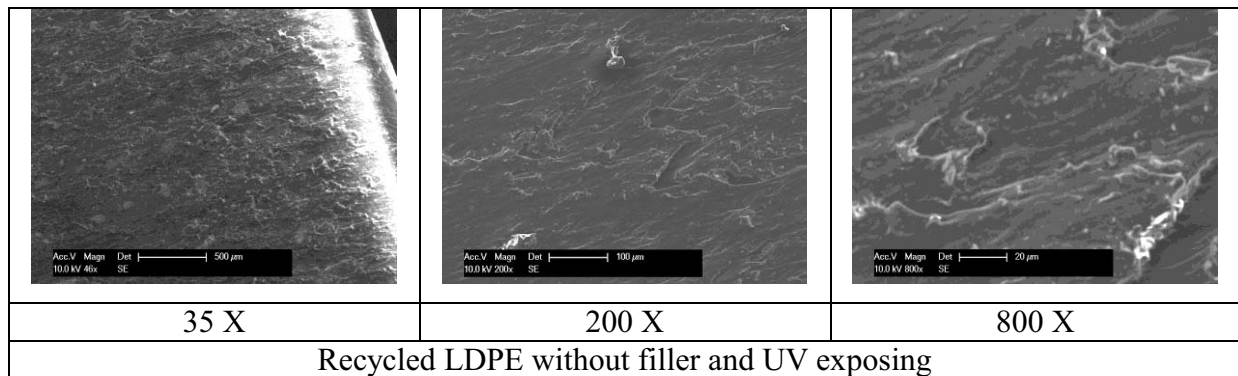
The University of Adelaide

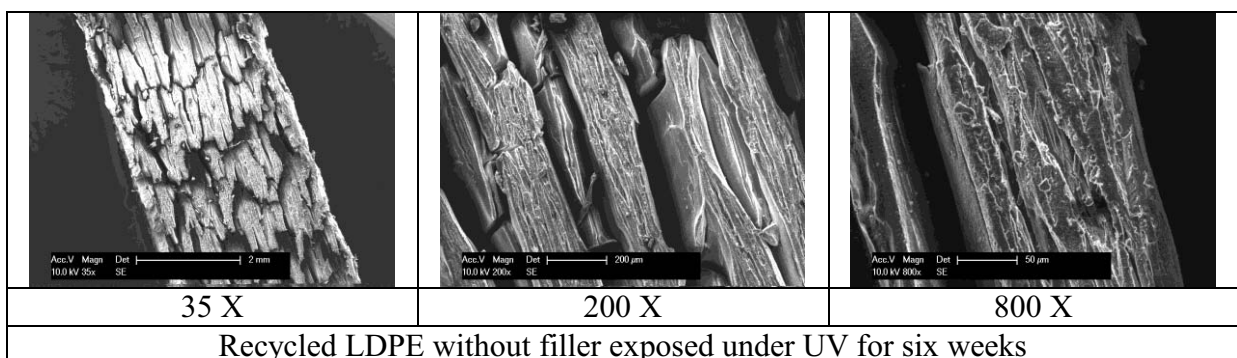
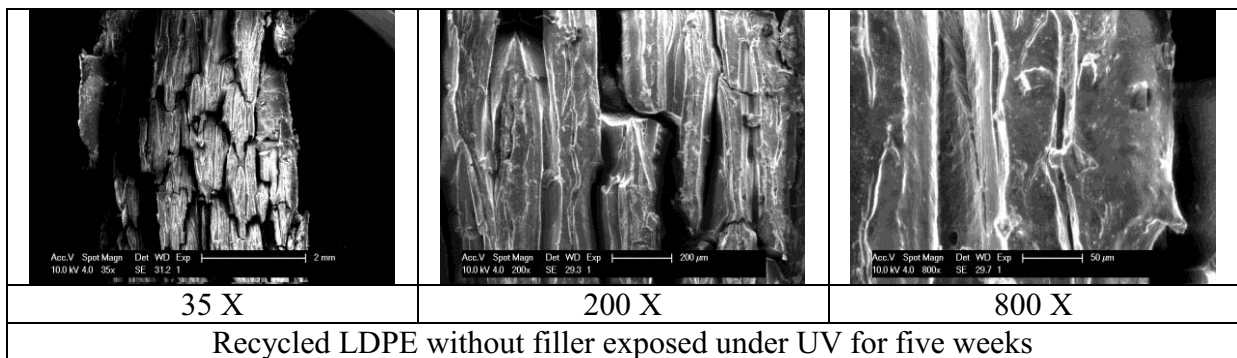
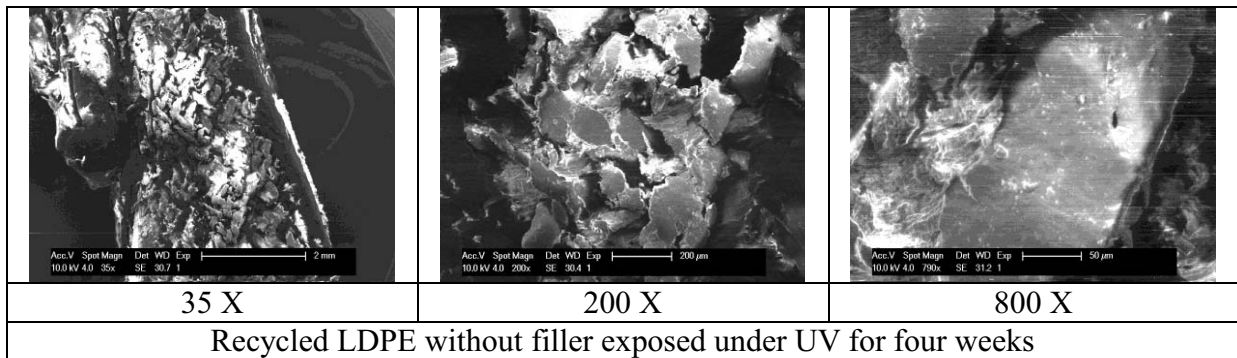
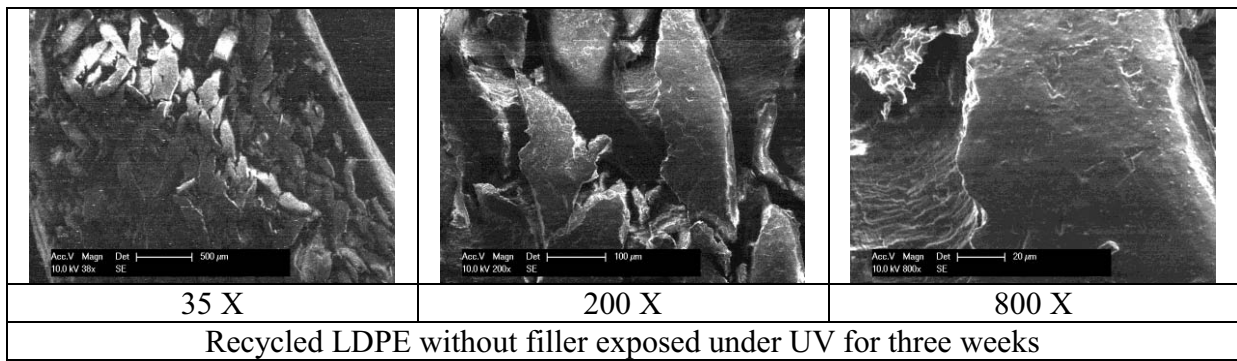


**A thesis submitted for the degree of
Master of Engineering Science**

APPENDIX D: SEM PHOTOGRAPHS

Table D-1. SEM photographs of recycled LDPE without filler under UV exposure





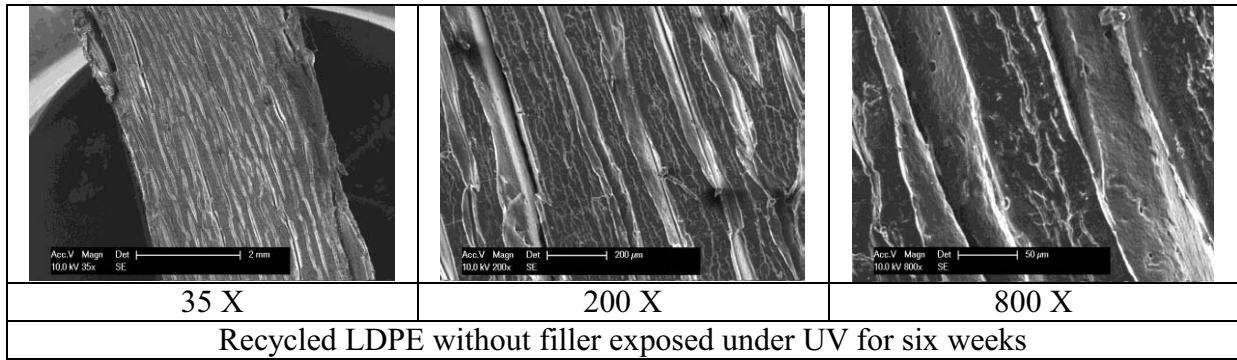
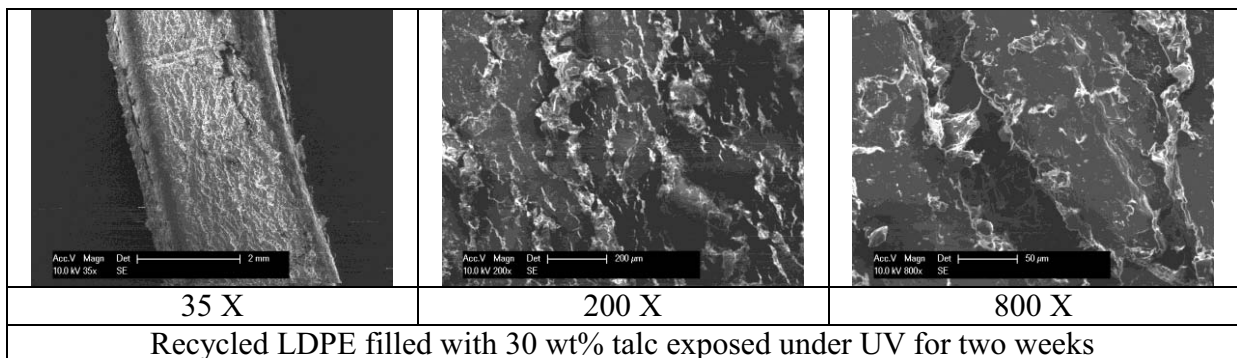
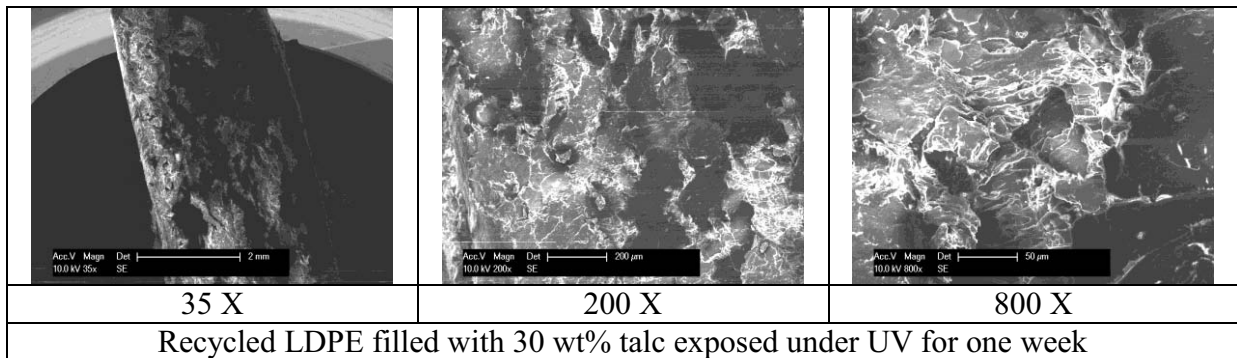
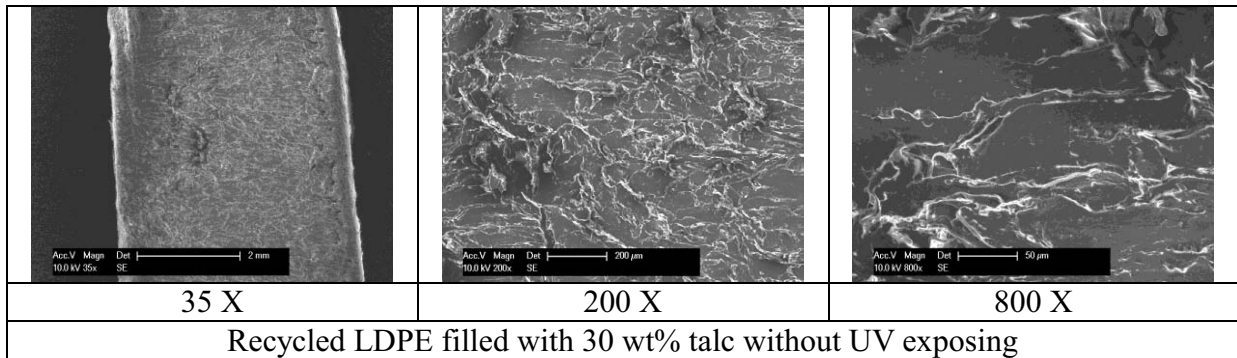
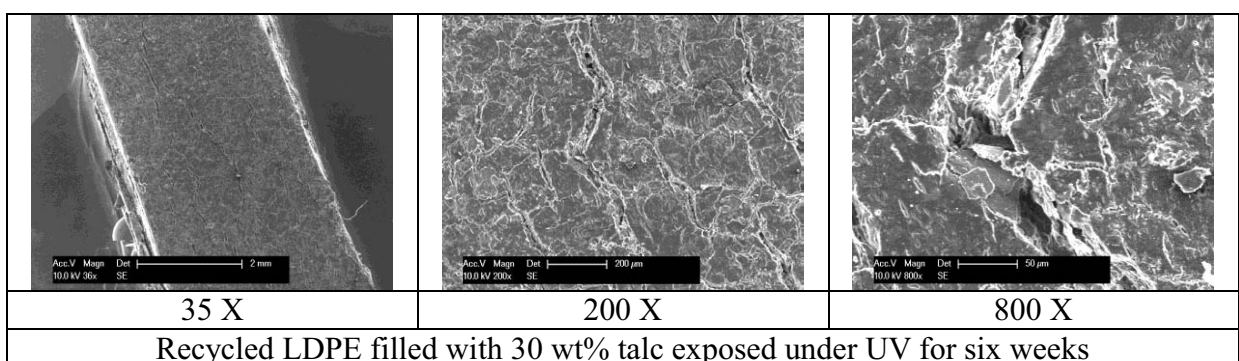
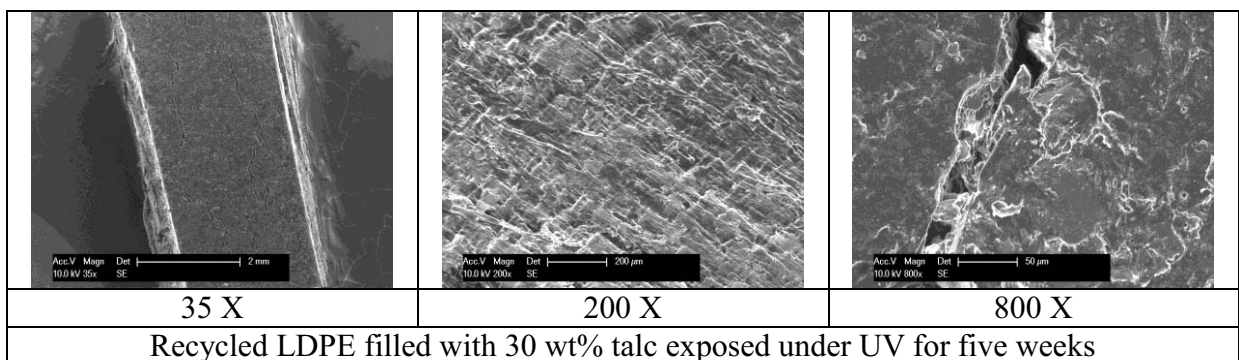
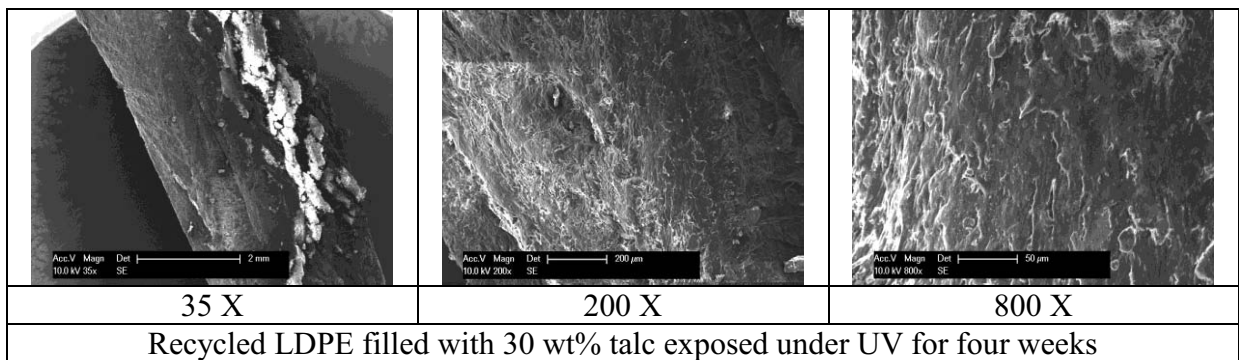
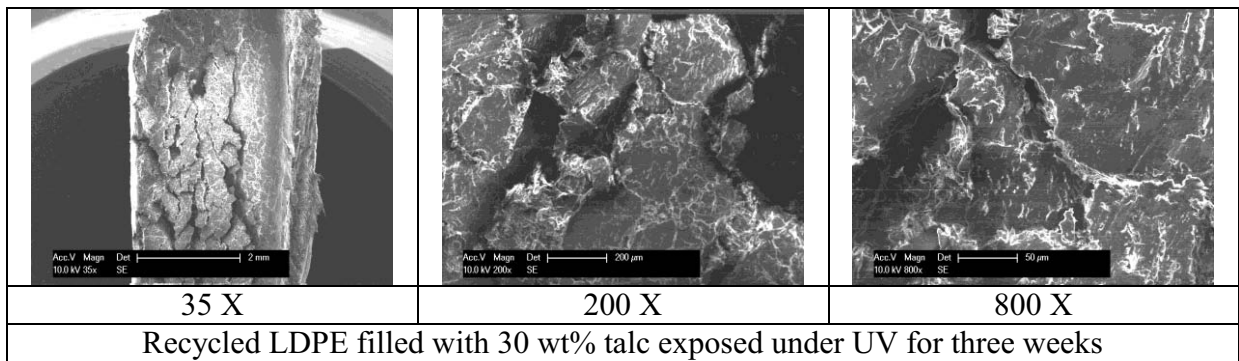


Table D-2. SEM photographs of recycled LDPE filled with 30wt% fine talc under UV exposure





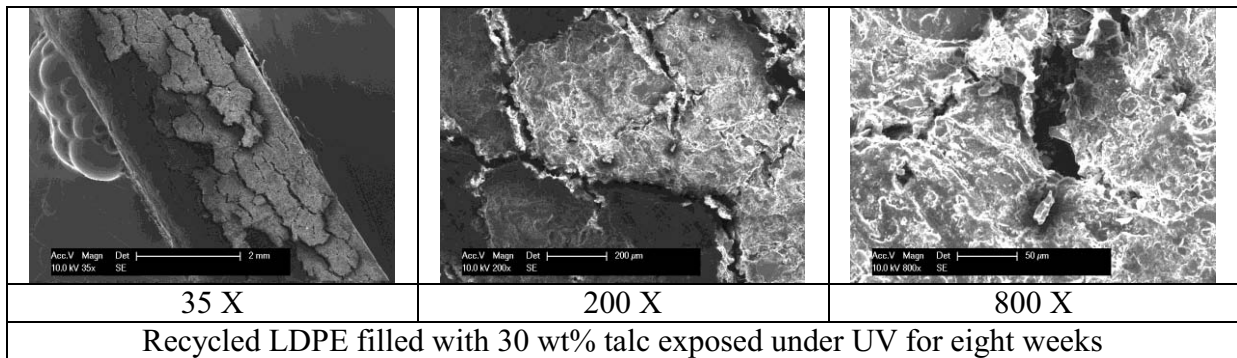
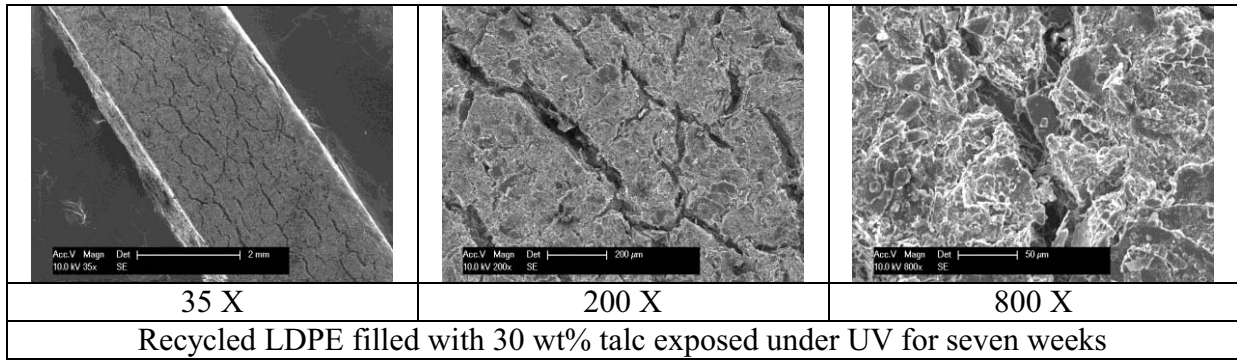
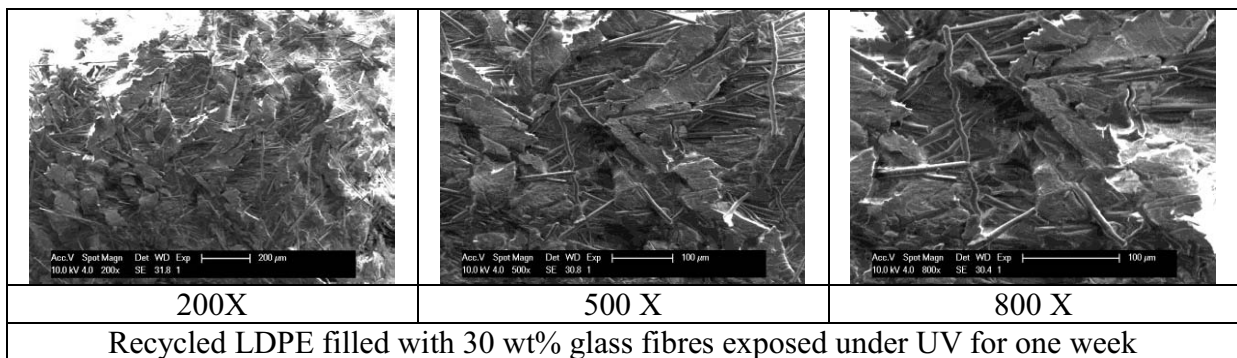
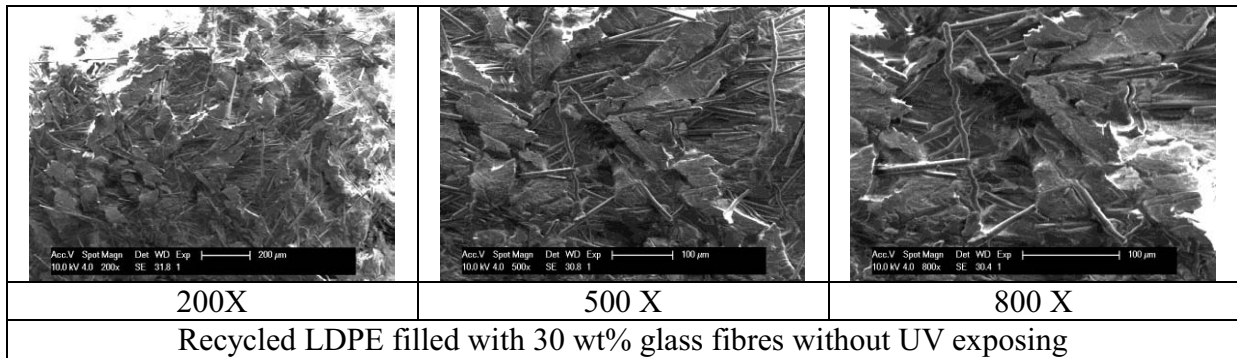
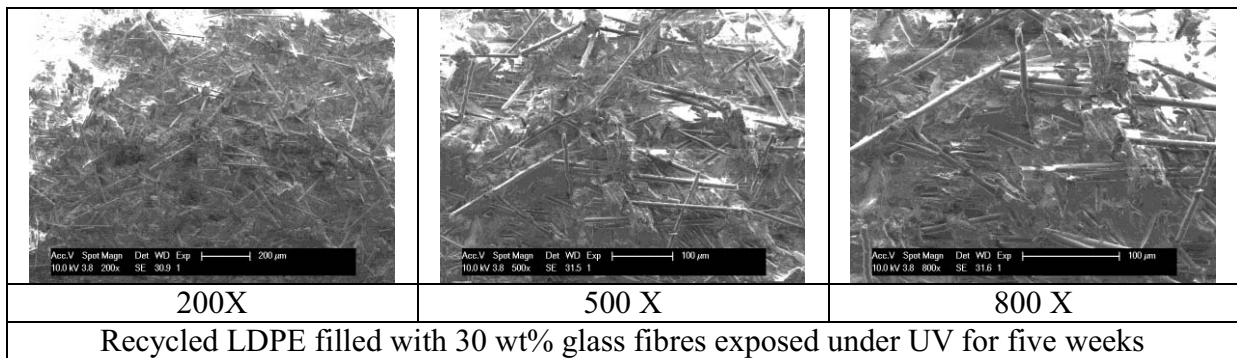
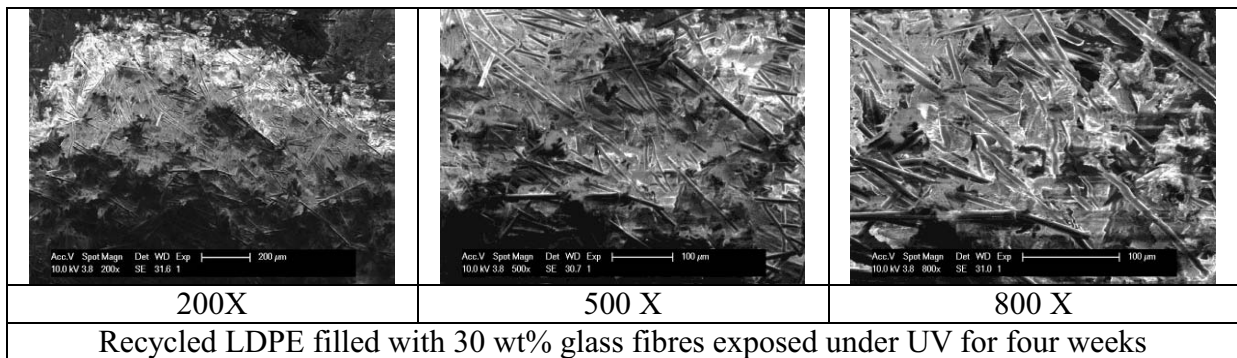
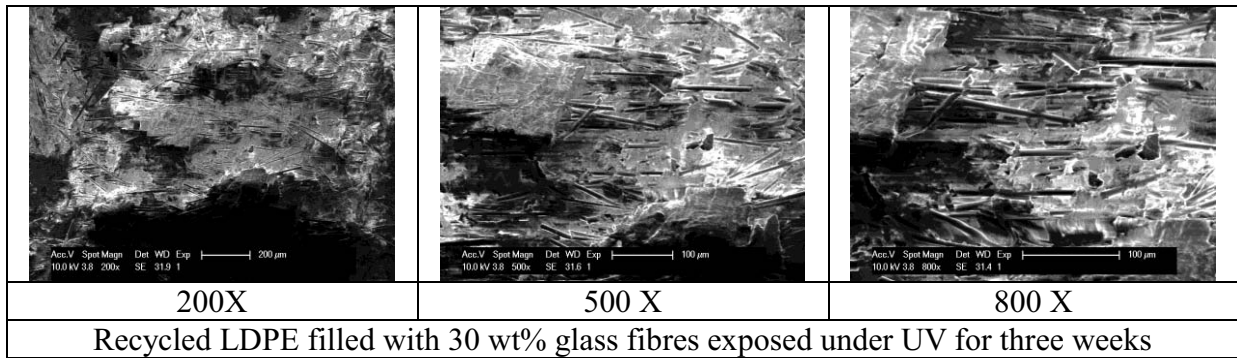
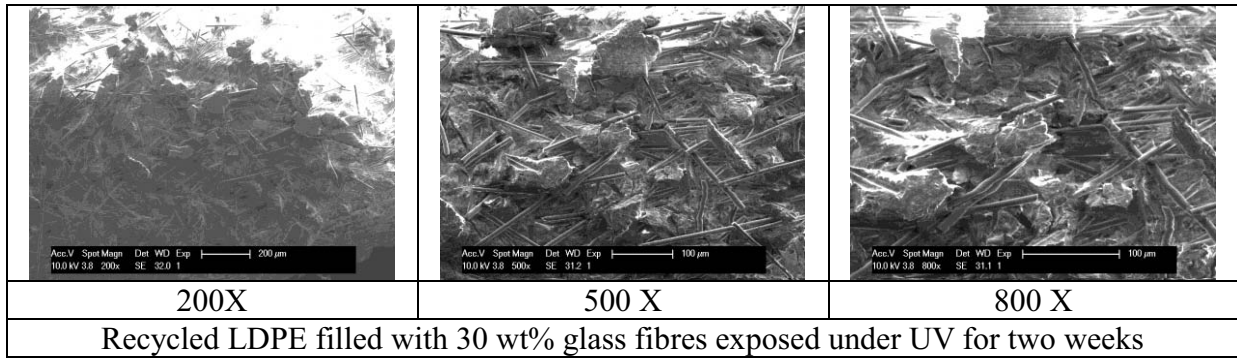


Table D-3. SEM photographs of recycled LDPE filled with 30wt%glass fibres under UV exposure





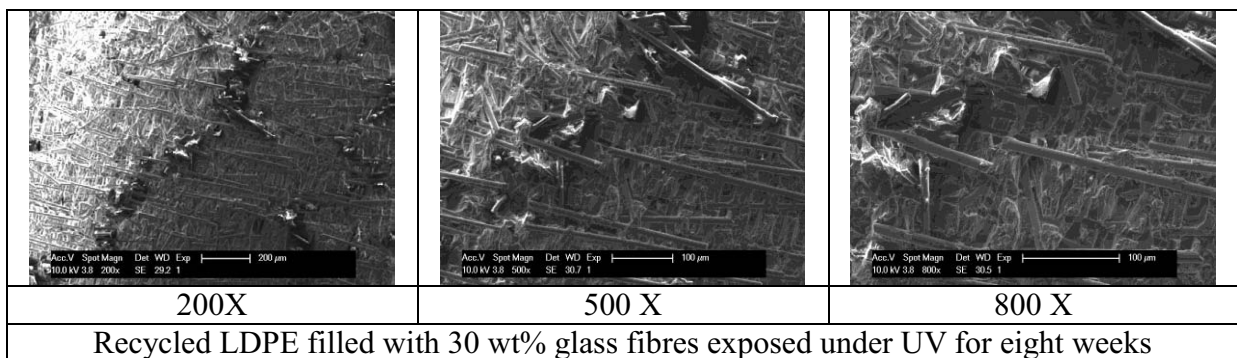
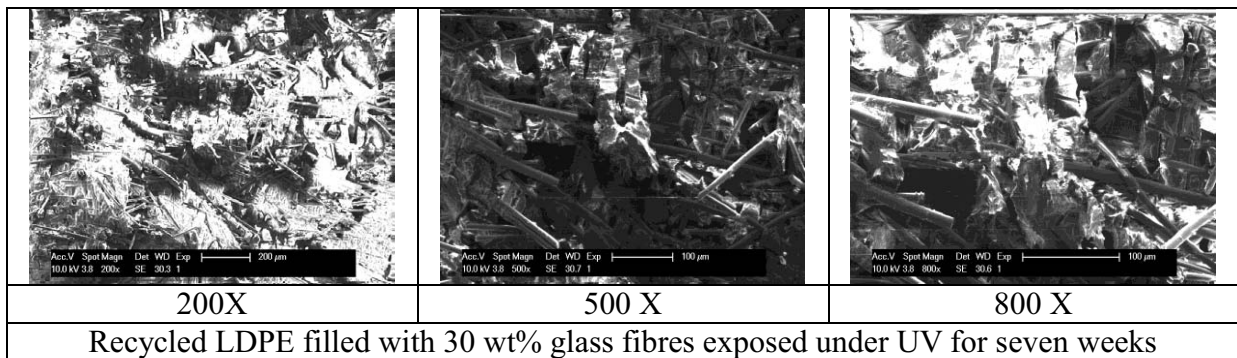
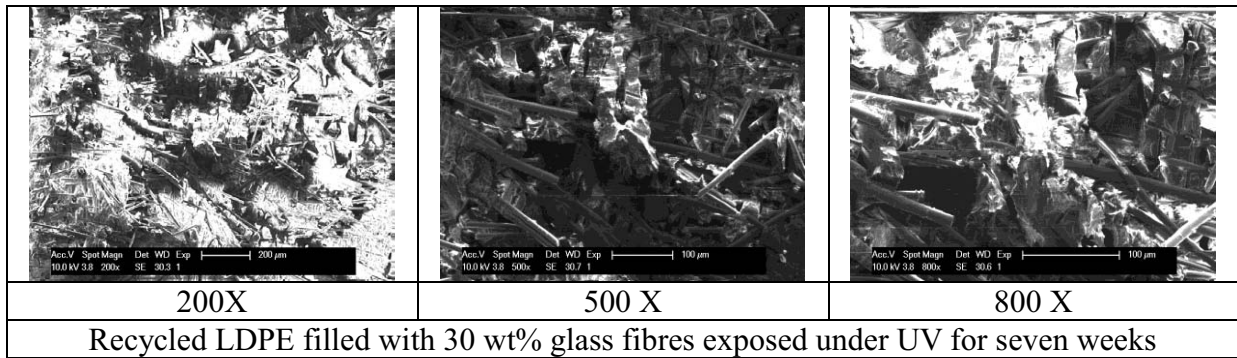
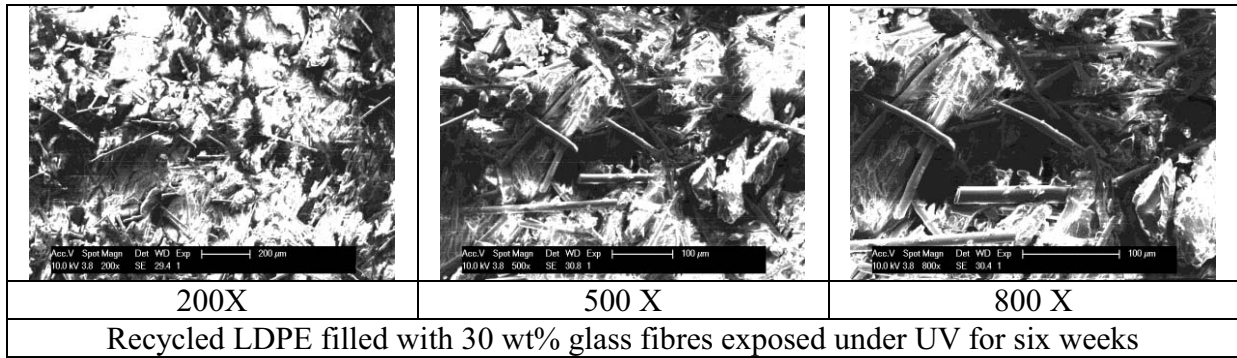
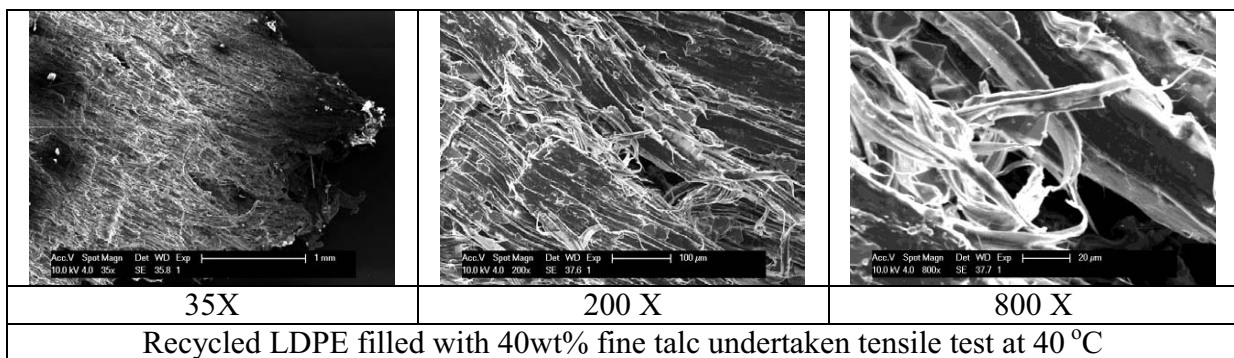
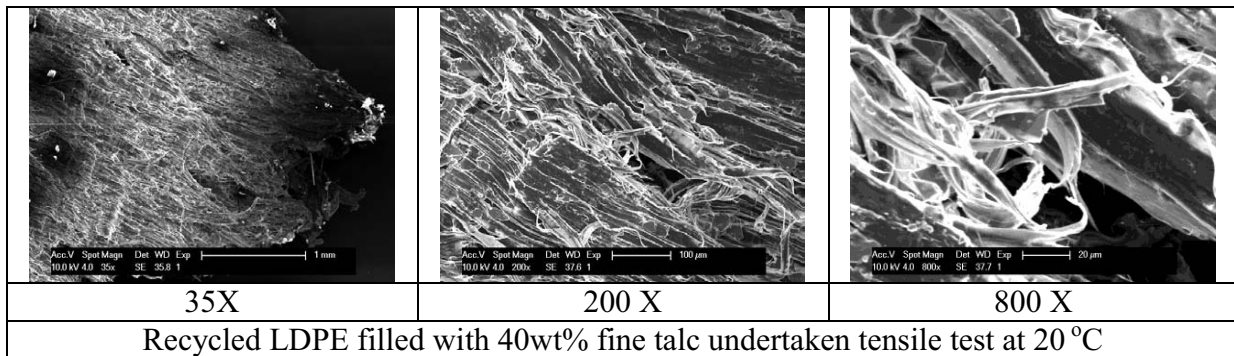
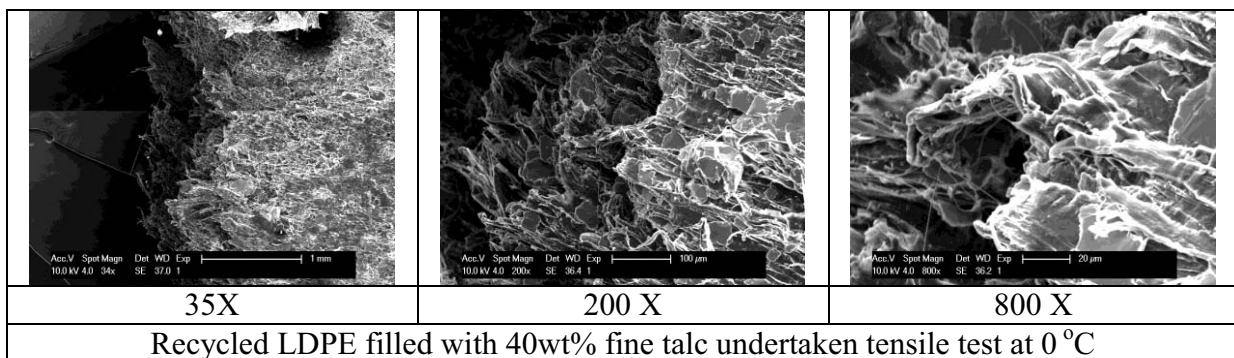
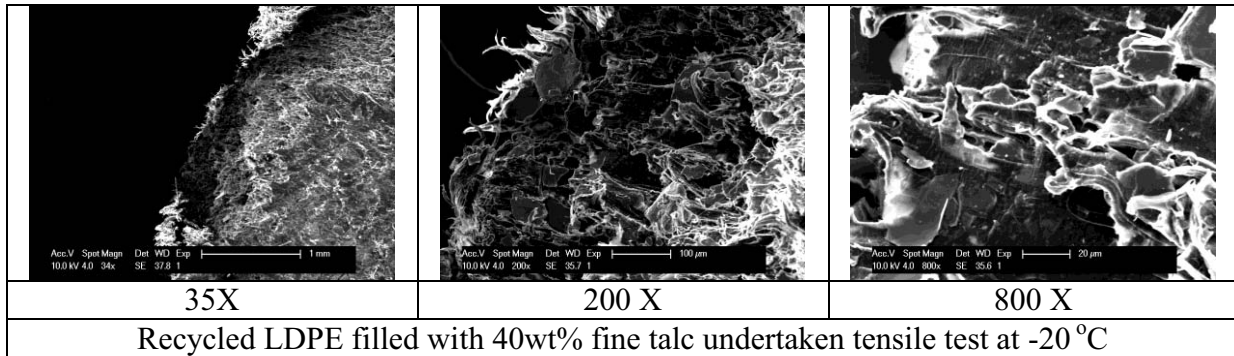


Table D-4 SEM photographs of recycled LDPE filled with 40wt% fine talc undertaken tensile test at different temperatures



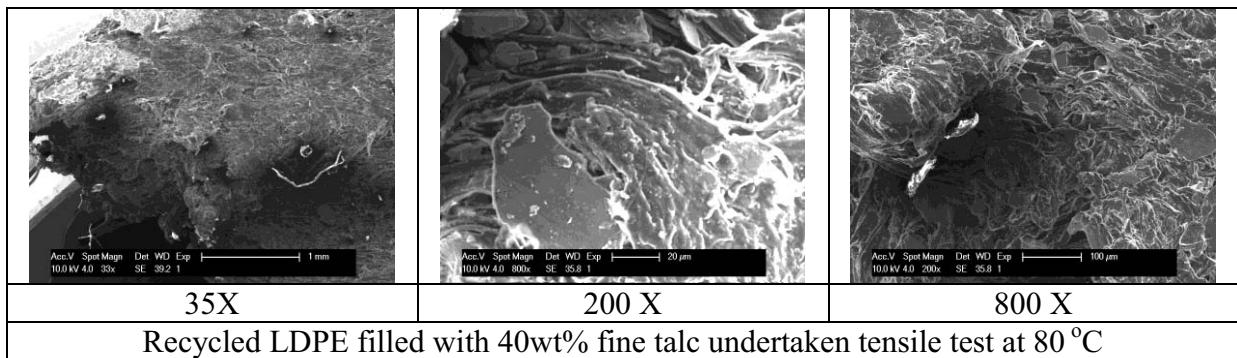
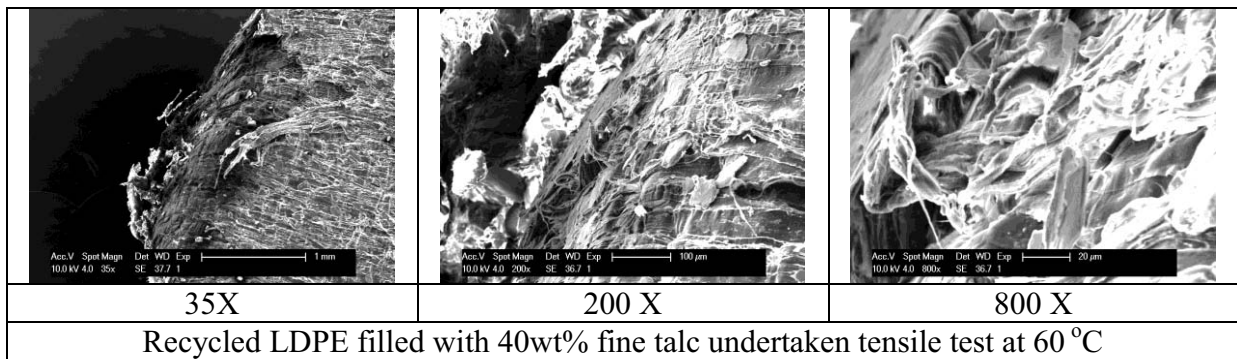
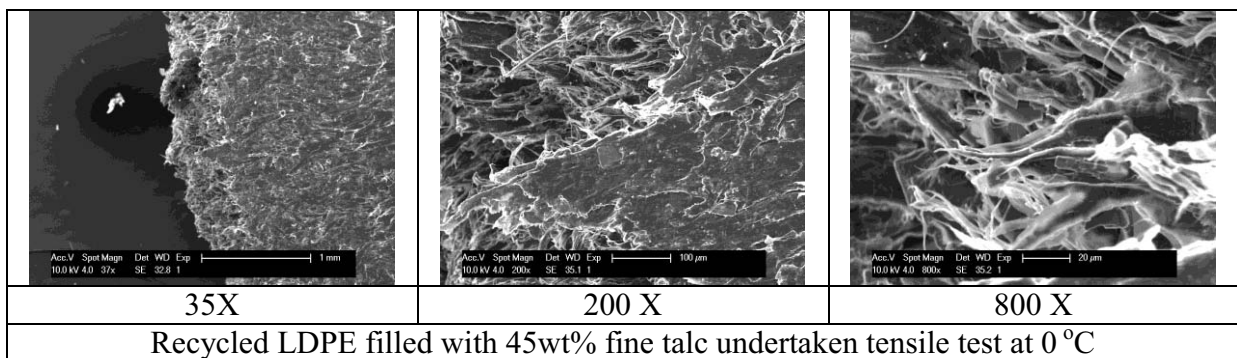
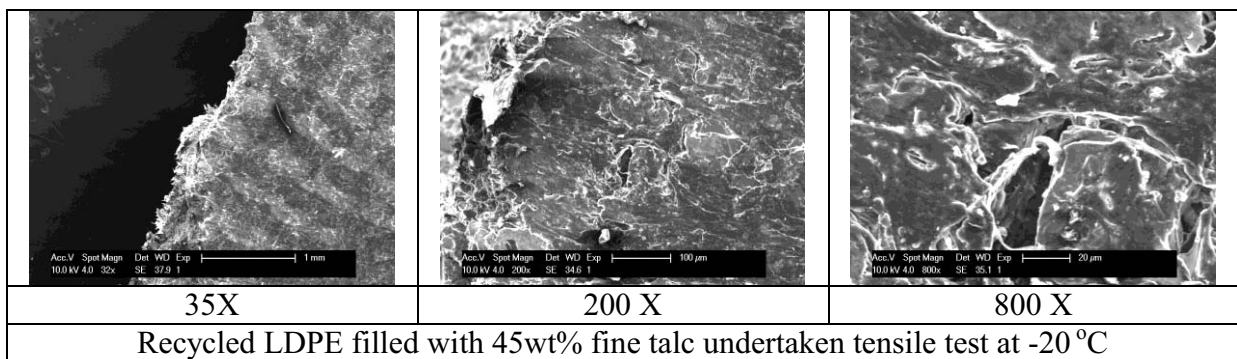


Table D-5 SEM photographs of recycled LDPE filled with 45wt% fine talc undertaken tensile test at different temperatures



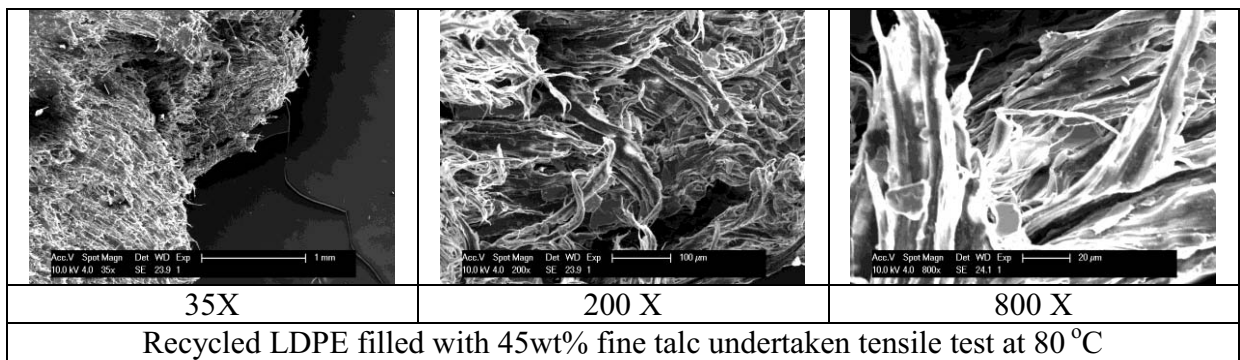
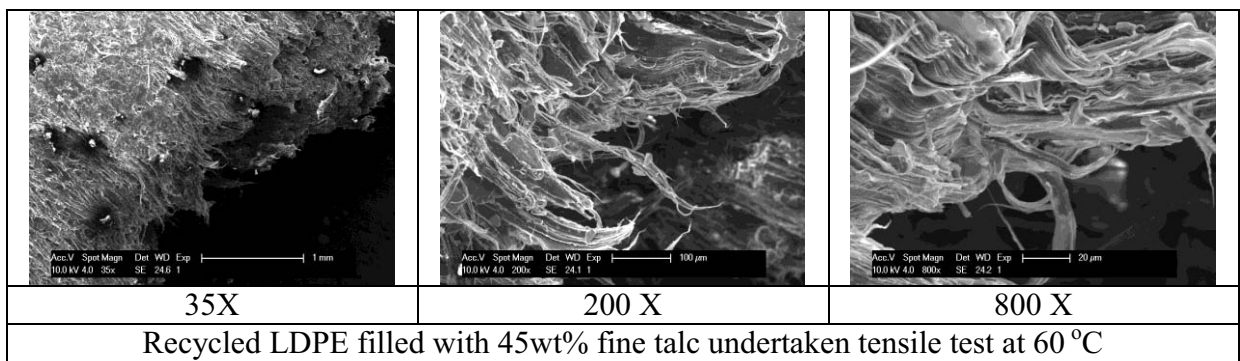
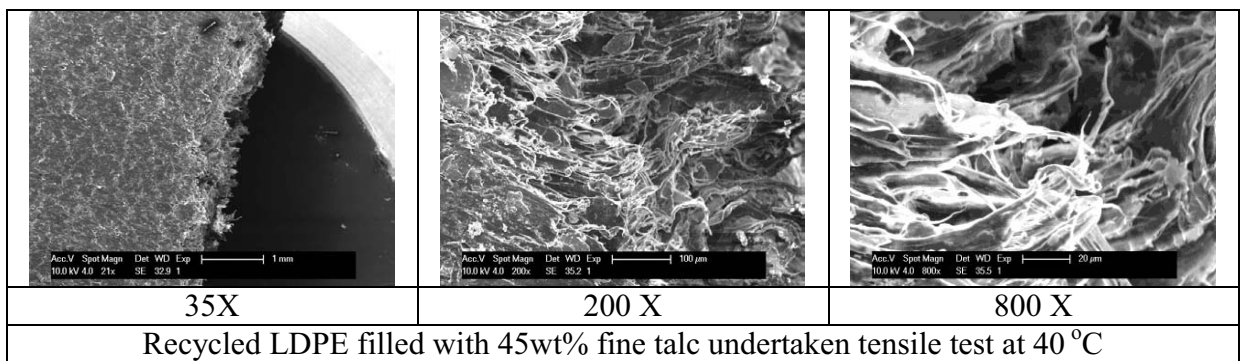
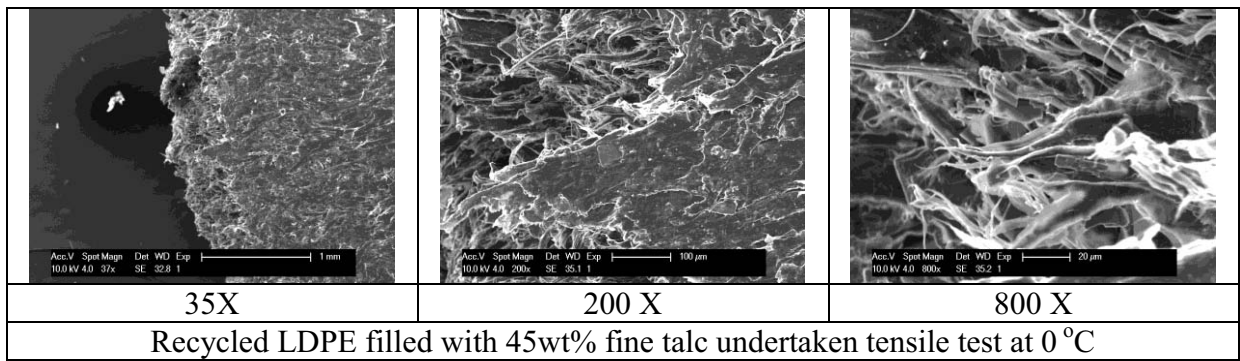
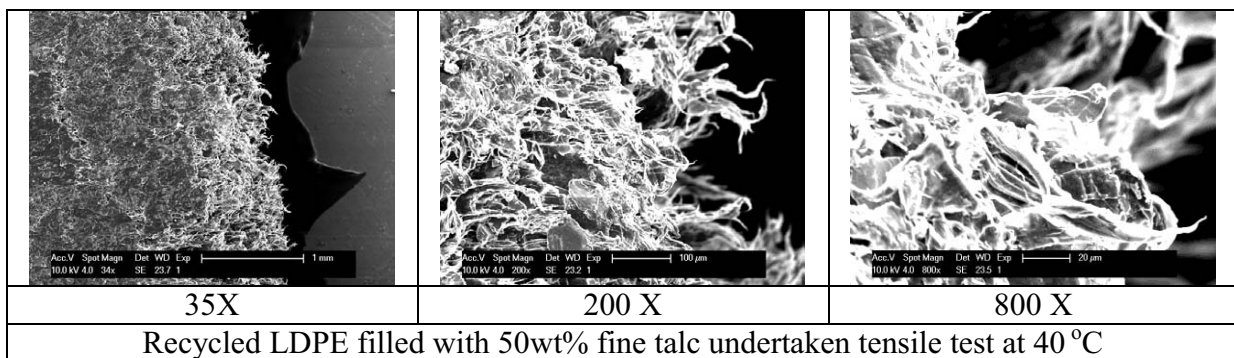
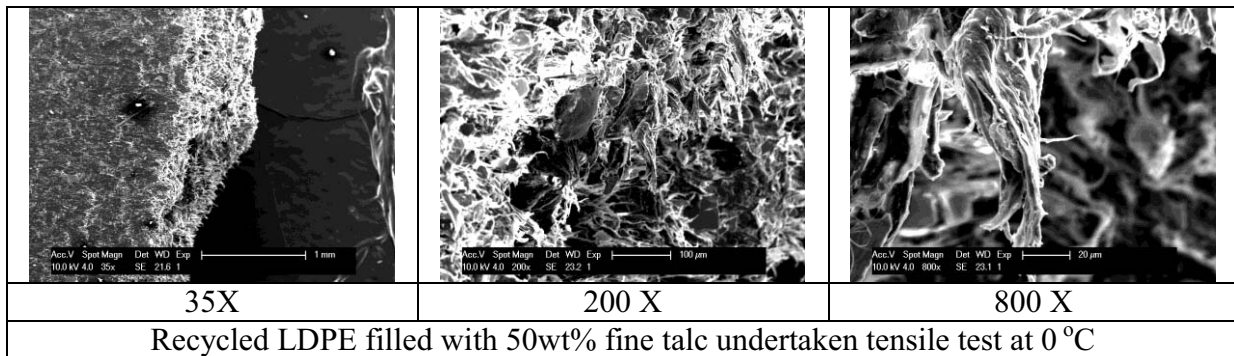
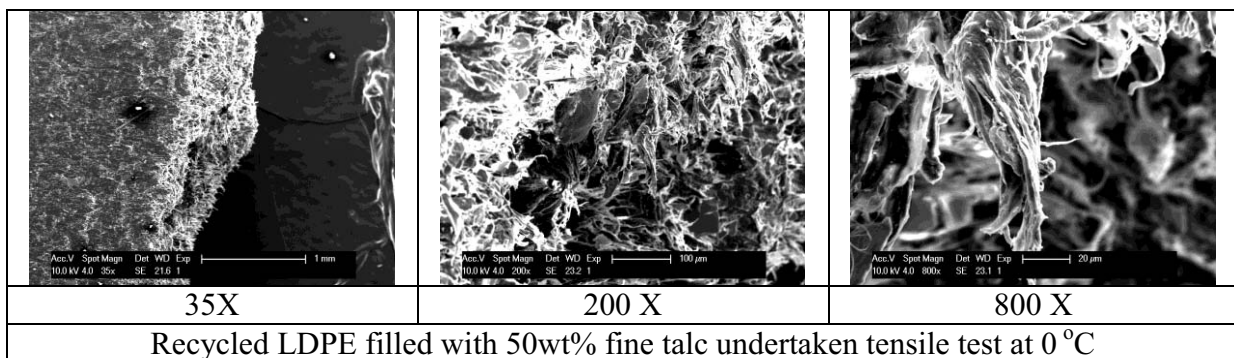
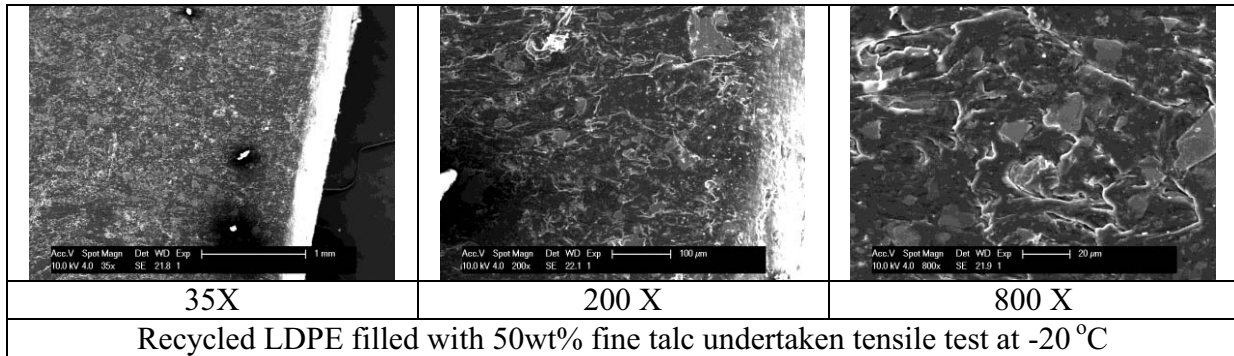


Table D-6 SEM photographs of recycled LDPE filled with 50wt% fine talc undertaken tensile test at different temperatures



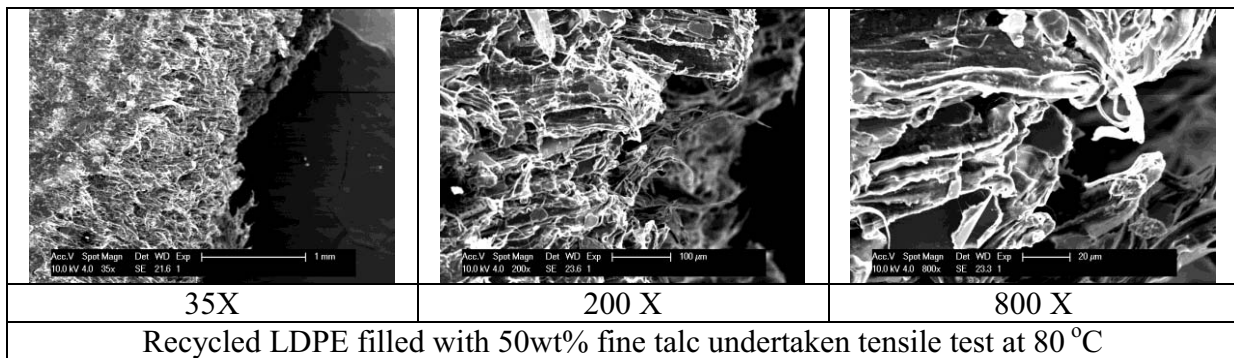
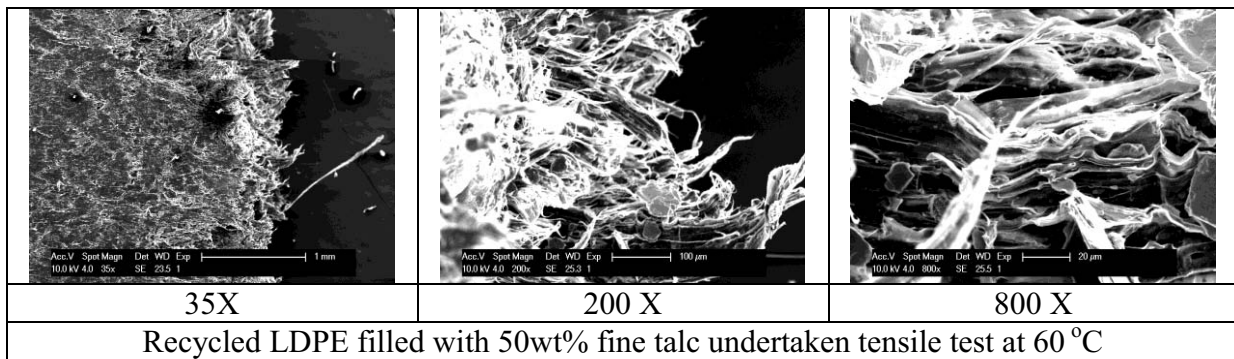
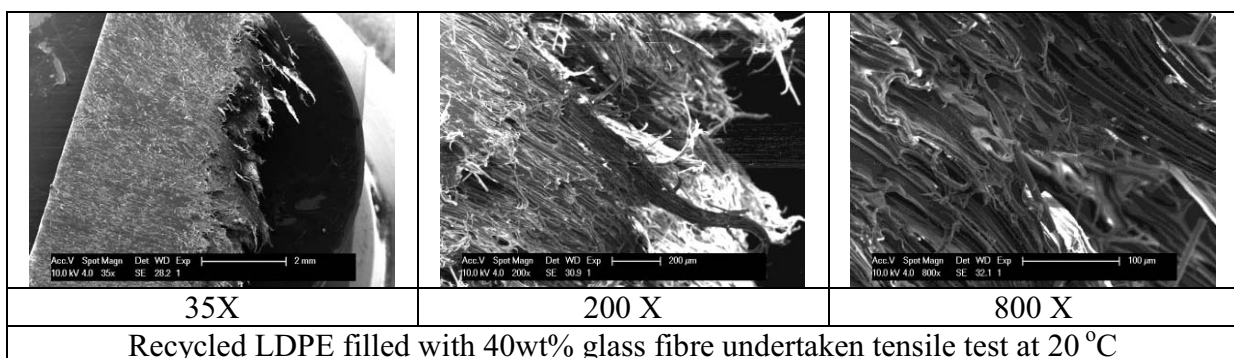
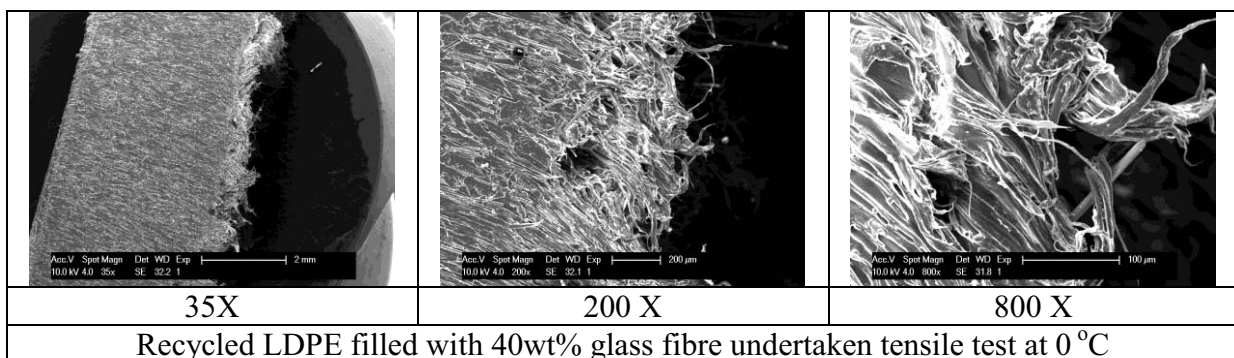


Table D-7 SEM photographs of recycled LDPE filled with 40wt% glass fibre undertaken tensile test at different temperatures



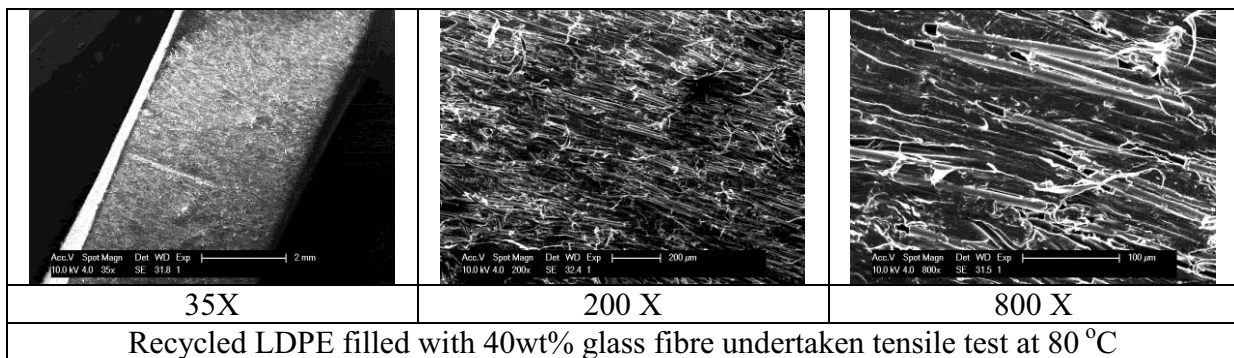
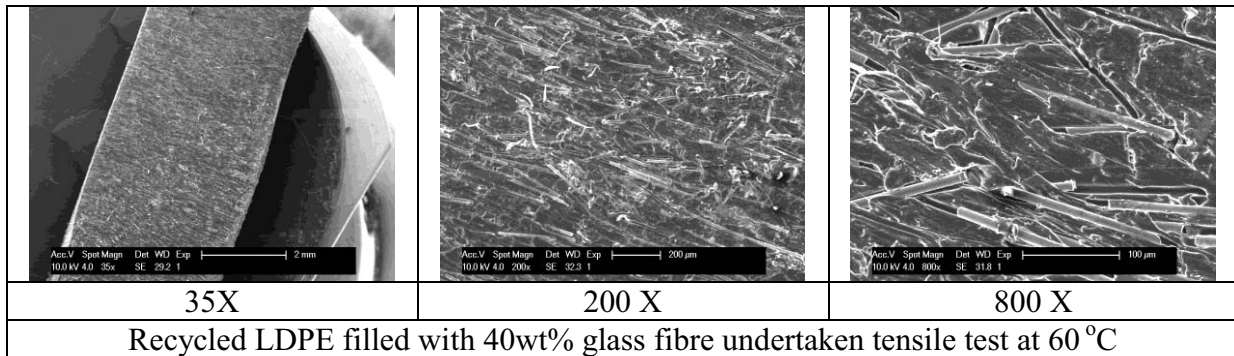
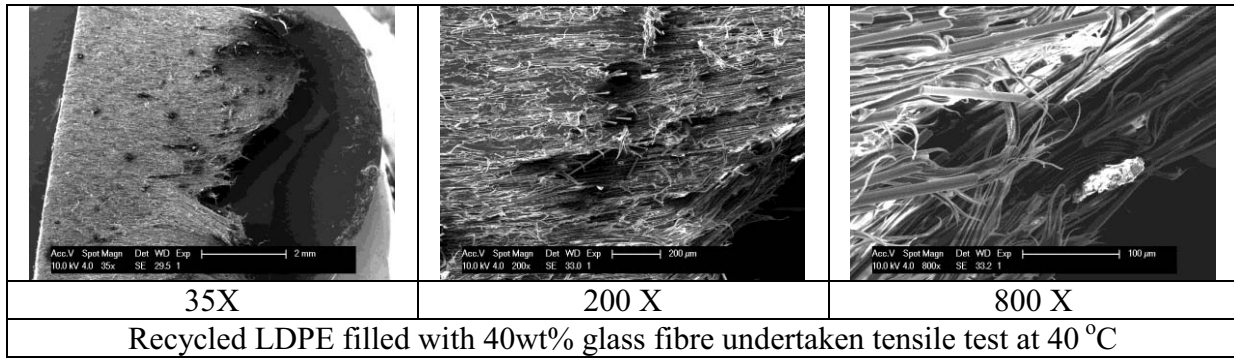
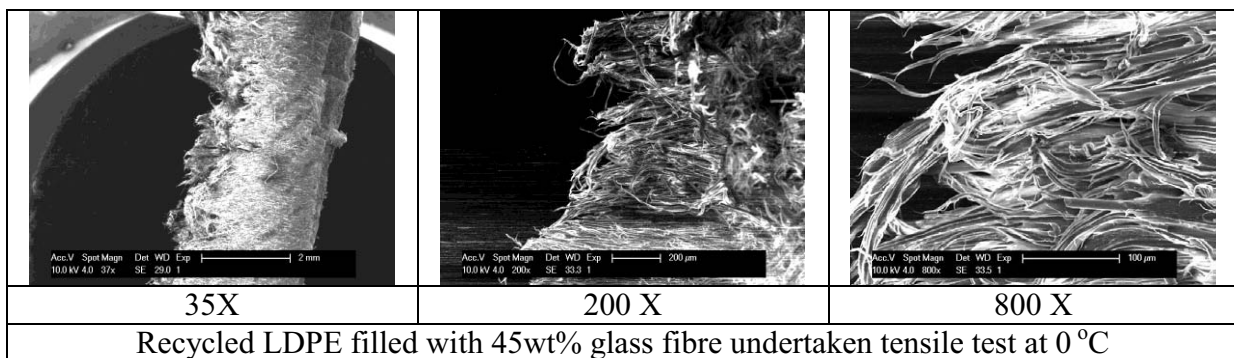


Table D-8 SEM photographs of recycled LDPE filled with 45wt% glass fibre undertaken tensile test at different temperatures



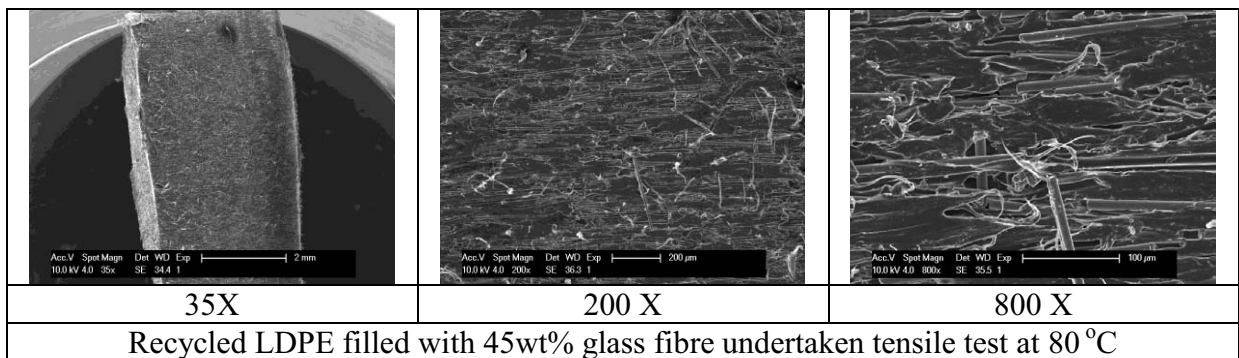
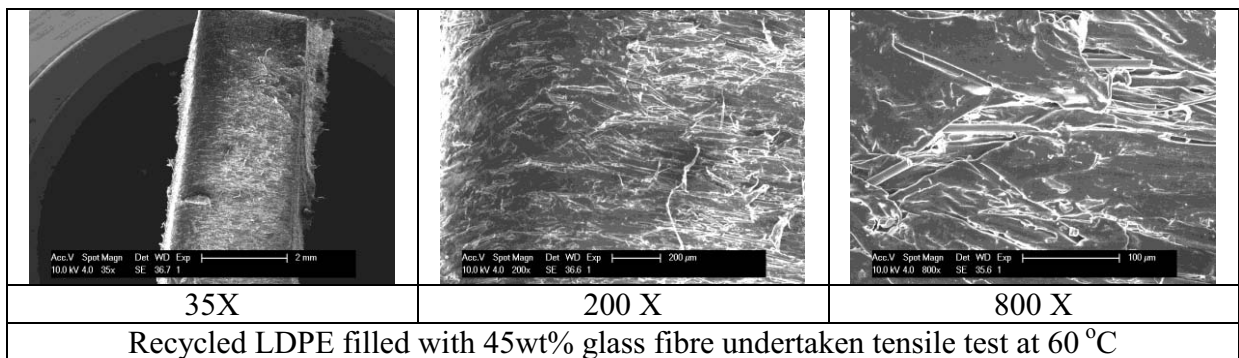
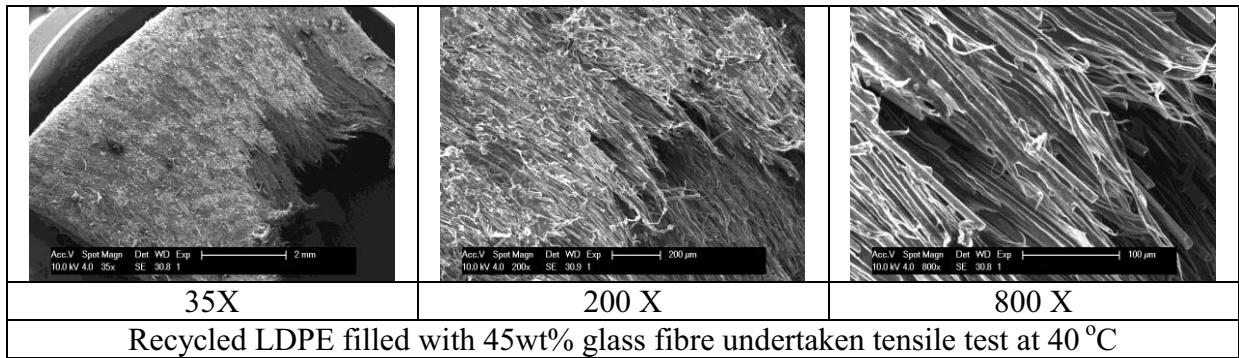
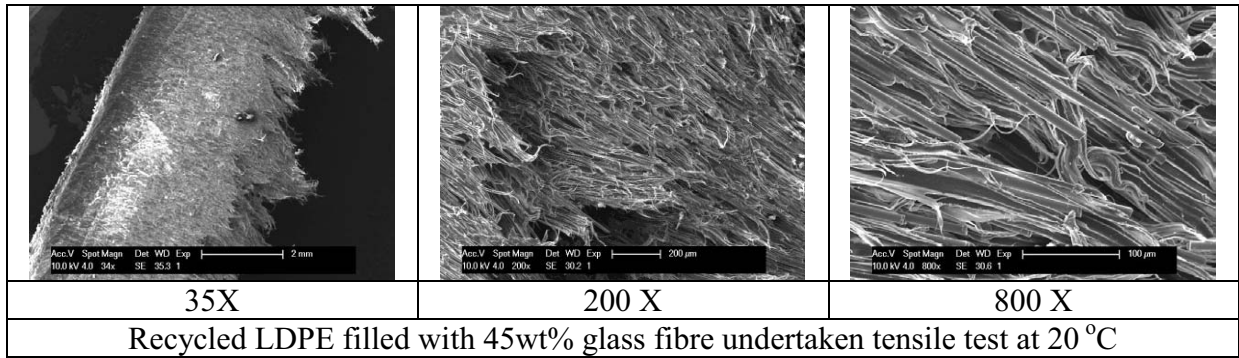


Table D-9 SEM photographs of recycled LDPE filled with 50wt% glass fibre undertaken tensile test at different temperatures

